



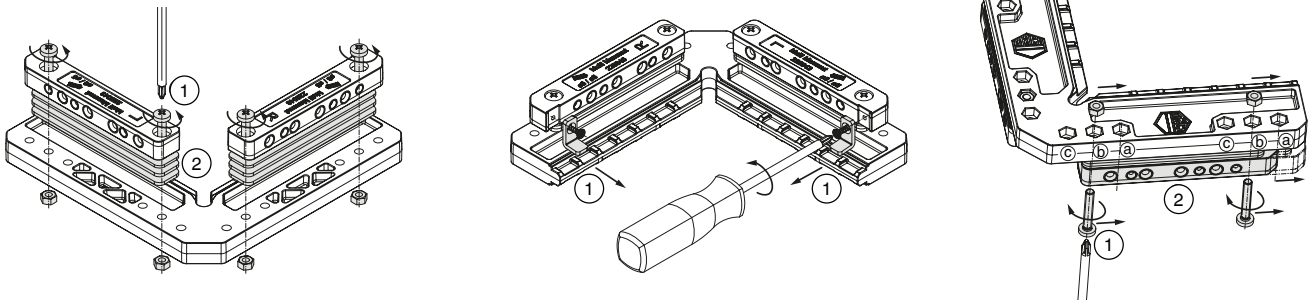
Beipackzettel jedem Artikel beifügen! (Download [www.maco.eu](http://www.maco.eu))



## Bohrlehre für Ecklagerband PVC und PVC Multi Mammut

(Art. Nr. 228043, 228776 und 229224)

Abb. 1 – Bohrlehre einstellen



### 1. Anpressdruck:

Einstellung durch verschieden hohe Unterlagen ② (7 mm = Standard).

(Set mit Unterlagen unter Art. Nr. 104941 erhältlich)

### 2. Überschlag:

Ü20 = Standardeinstellung.

Für größere Überschläge Winkel ① entfernen.

Maximaler Überschlag = 22 mm.

### 3. Position Bohrkörper:

#### (Rahmenprofil/Bodenschwellen)

Bohrkörper ② Multi Mammut in Position:

① = Bodenschwelle

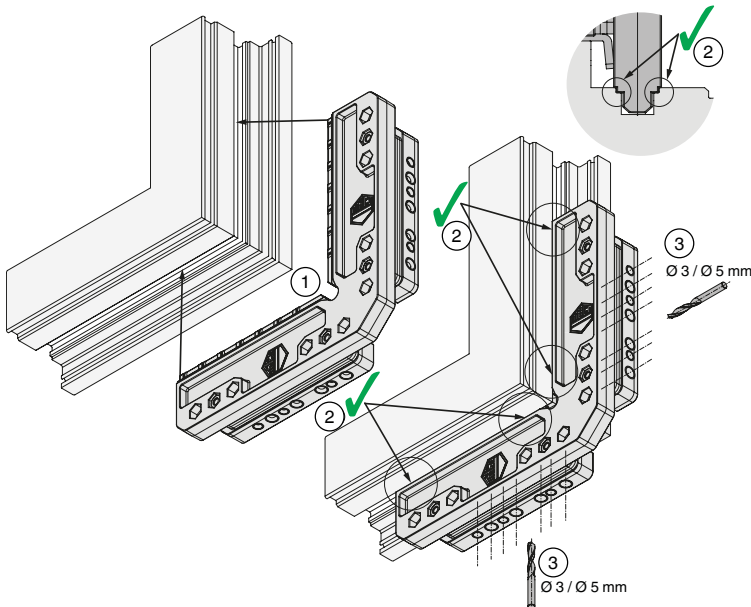
② = Rahmenprofil (Standard)

Bohrkörper ② PVC (5 mm Zapfen) in Position:

① = Rahmenprofil (Standard)

② = Bodenschwelle

Abb. 2 – Verwendung der Bohrlehre



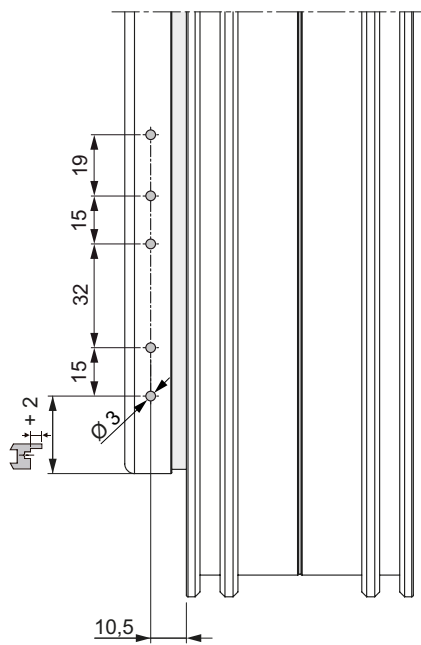
① Bohrlehre in Beschlagsnut einlegen.

② Position der Lehre in der Beschlagsnut prüfen (Anlegen über die gesamte Länge).

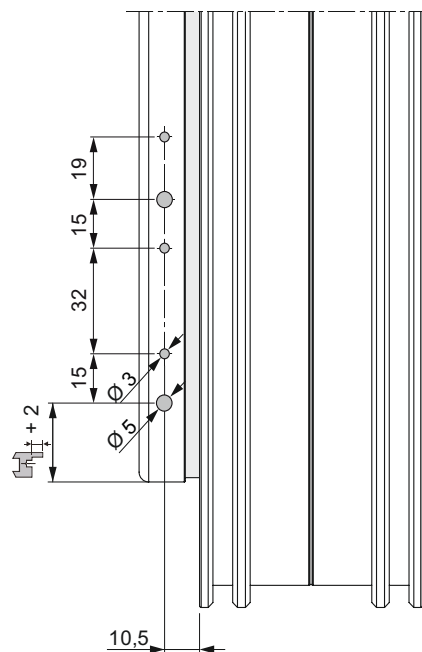
③ Vorbohren mit  $\varnothing 3$  bzw.  $\varnothing 5$  mm (s. Bohrbild).

### Abb. 3 – Bohrbild

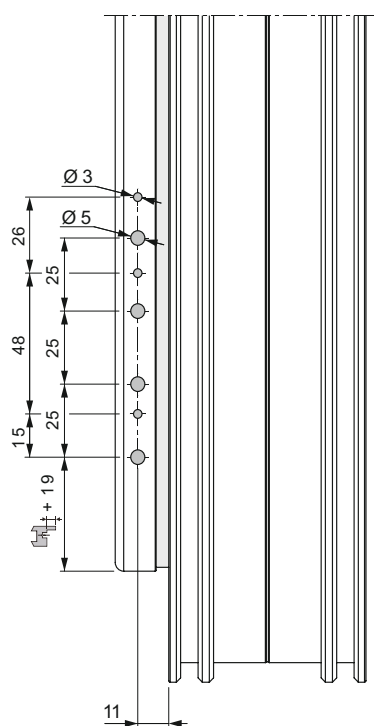
Ecklagerband PVC mit Positionszapfen Ø 3 mm



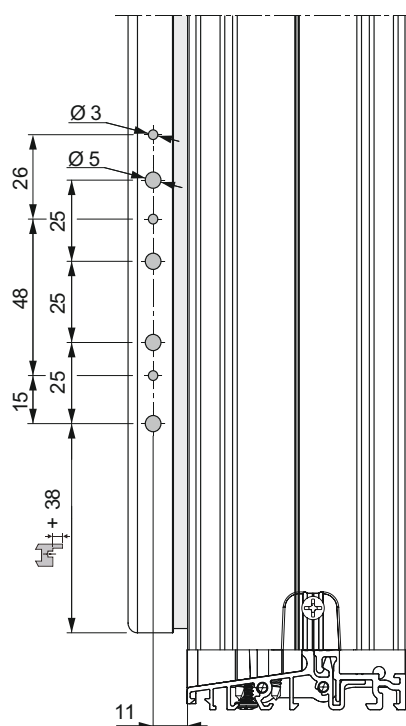
Ecklagerband PVC mit Tragezapfen Ø 5 mm



Ecklagerband PVC Multi Mammut (Rahmenprofil)



Ecklagerband PVC Multi Mammut (mit Bodenschwelle)





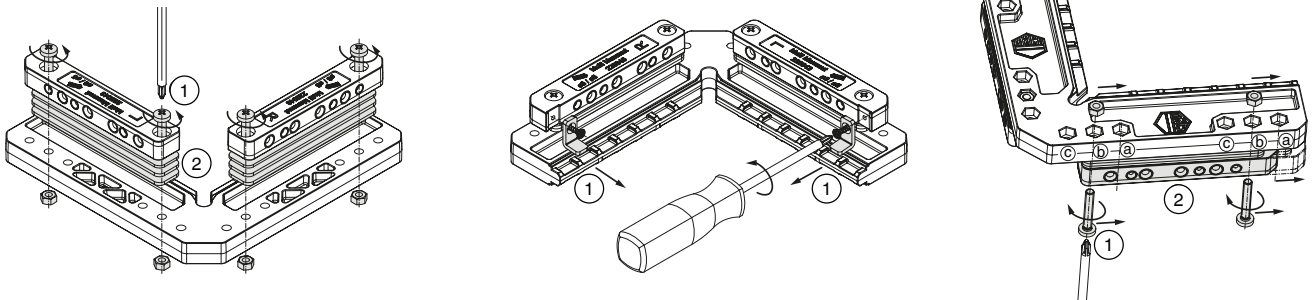
Enclose instruction leaflet with each article! (Download [www.maco.eu](http://www.maco.eu))



## Drilling jig for corner supports PVC and PVC Multi Mammut

(Item No. 228043, 228776 and 229224)

Fig. 1 – Setting the drilling jig



### 1. Gasket compression:

Adjustment by different heights of packers ②  
(7 mm = standard).

(Set with packer under Art. Nr. 104941 available)

### 2. Sash overlap:

Ü20 = standard setting.

Remove for larger sash overlap ① angles.

Maximum sash overlap = 22 mm.

### 3. Position drill body:

#### (Frame profile/threshold)

Drill body ② Multi Mammut in position:

① = threshold

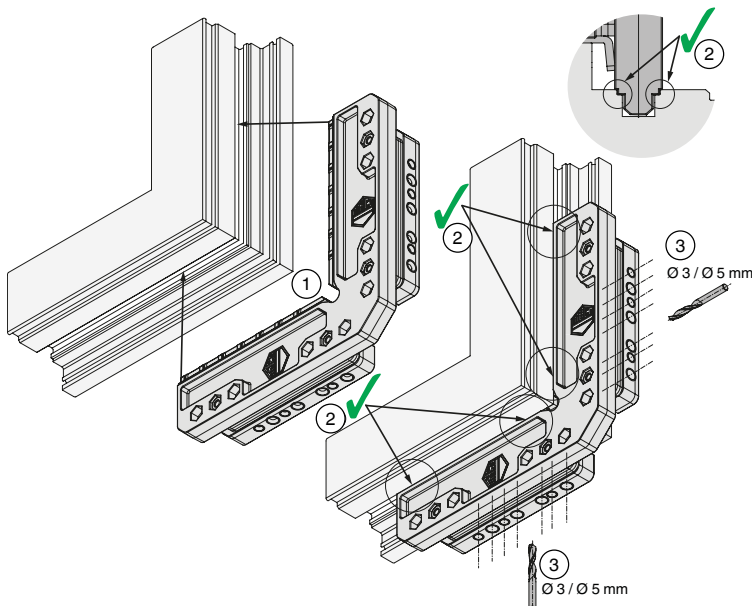
② = frame profile (standard)

Drill body ② PVC (5 mm cam) in position:

① = frame profile (standard))

② = threshold

Fig. 2 – Use of drilling jig



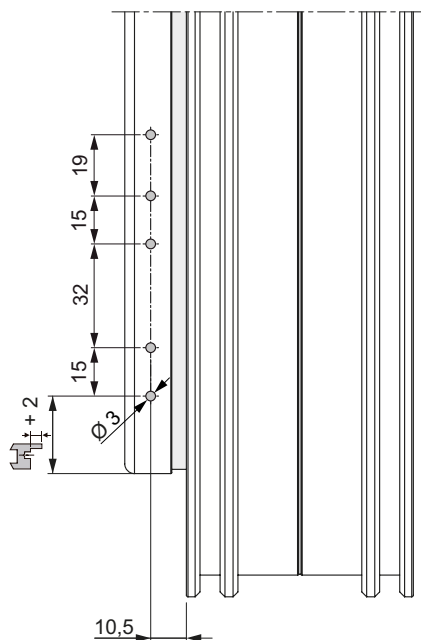
① Insert drilling jig in Eurogroove.

② Check the position of the jig carefully (over its entire length).

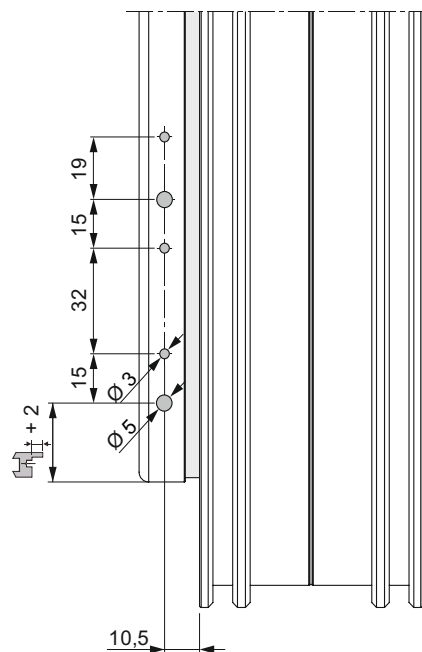
③ Pre-drill with Ø 3 or 5 mm (see drilling-hole pattern).

**Fig. 3 – Drilling-hole pattern**

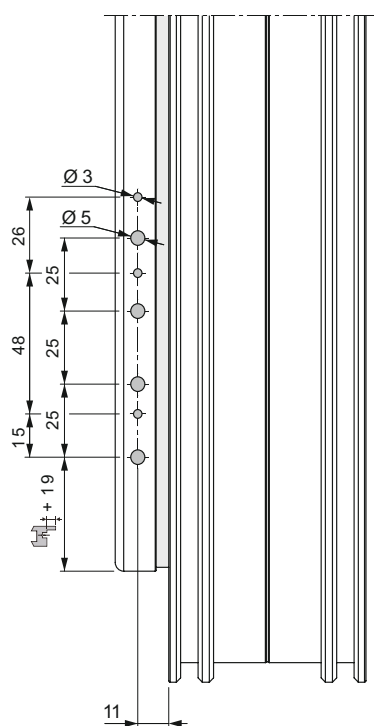
Corner support PVC with 3 mm positioning pin



Corner support PVC with 5 mm supporting pins



Corner support PVC Multi Mammut (frame profile)



Corner support PVC Multi Mammut (with treshold)

