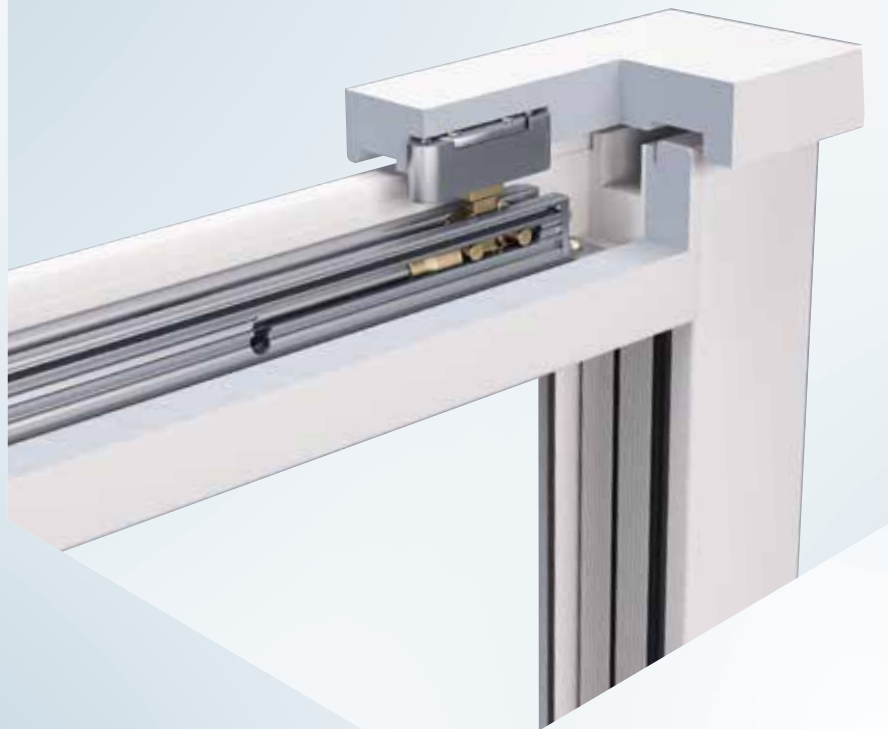


ORDERING TOOL / MOUNTING INSTRUCTIONS

# HS comfort close concealed arrangement

## System Salamander L&S door



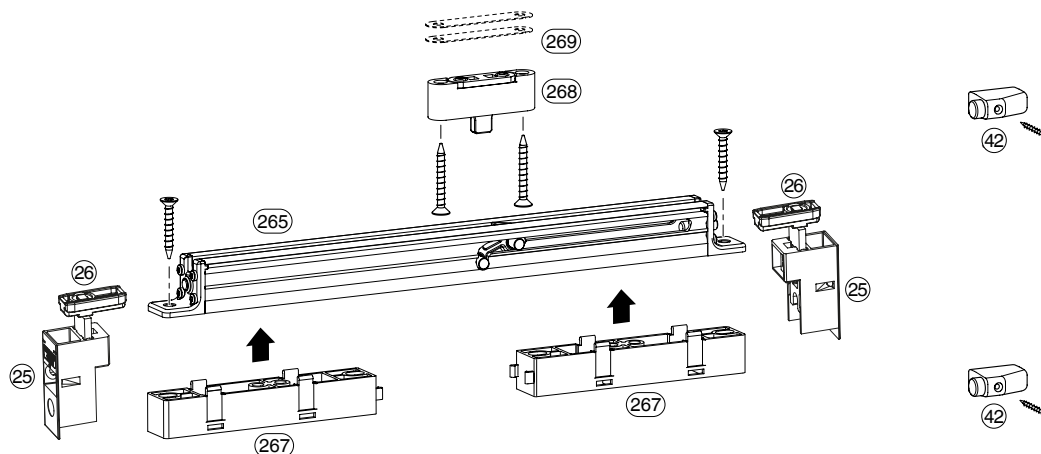
Use  
**exclusively for specialists!**



## Table of Contents

| <b>Description</b>        | <b>Page</b> |
|---------------------------|-------------|
| Fittings overview         | 3           |
| Preparation frame         | 4           |
| Preparation sash          | 5 - 6       |
| Mounting sash and frame   | 7           |
| Reference dimension       | 7           |
| Completion of guide track | 8           |
| Adjustment option         | 9           |
| Limit opening width       | 10          |
| Technical data            | 10          |

## Fittings overview



| Pos.  | Description        |
|-------|--------------------|
| (42)  | Sash buffer        |
| (265) | Comfort Close      |
| (267) | Packer housing     |
| (268) | Frame piece        |
| (269) | Packer frame piece |

Screws are not included in scope of delivery. Respective specifications represent a recommendation, only.

**Note:** All measurements in this document are indicated in millimetres.

### Items required for scheme

| A  | C               | Article description   | Item Code                                    |
|----|-----------------|---|--|
| 1  | 1 <sup>y)</sup> | size 1 $\leq 200$ kg <b>sash weight</b><br>$\leq 30$ N <b>Sliding force</b>                   | 300359                                       |
|    |                 | size 2 $> 200 \dots 300$ kg <b>sash weight</b><br>$\leq 50$ N <b>Sliding force</b>            | 300360                                       |
| 1  | 1 <sup>y)</sup> | <b>Frame piece concealed arrangement B = 13 mm 19 mm</b><br><b>Comfort Close silver (268)</b> | 300380                                       |
| x) | x)              | <b>Cover frame piece concealed arrangement Comfort Close (no ill.)</b>                        | 300432                                       |
| x) | x)              | <b>Packer concealed arrangement NB = 12 mm 0.5 mm for frame piece Comfort Close (269)</b>     | 302323                                       |
| 1  | 1 <sup>y)</sup> | <b>Accessories 36 Comfort Close (267) (269)</b>   | 301847                                       |
| 2  | 4               | <b>Buffer stop HS PVC (42)</b>  | white 102945    black 102946    brown 102947 |
| 2  | 4               | <b>Top guide drive gear side for guide track C silver (26) (25)</b>                           | 208437                                       |

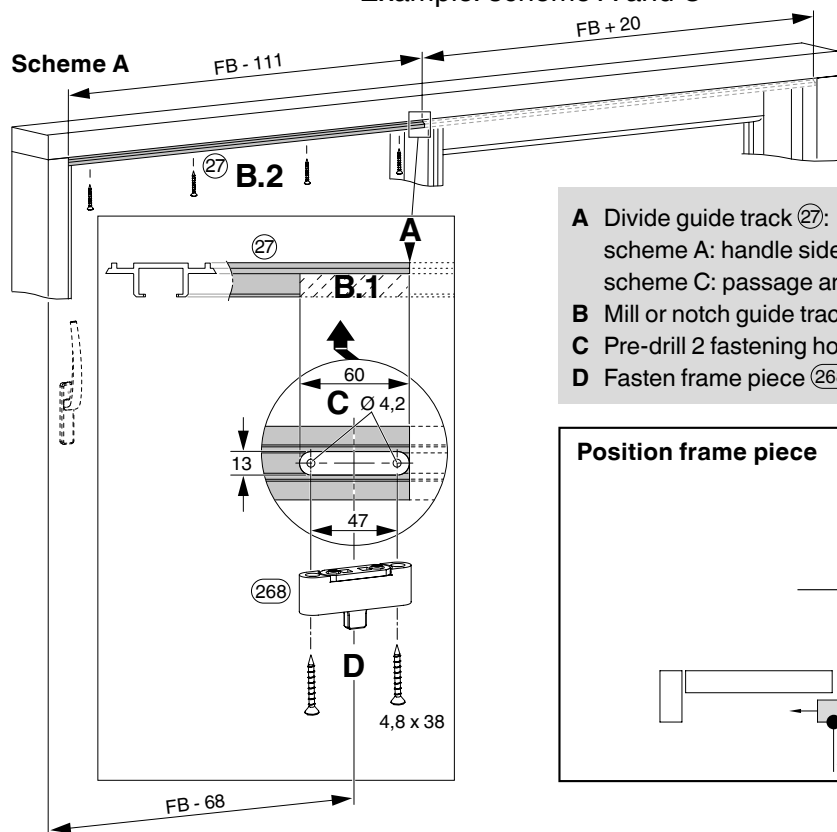
x) optional

y) per sliding sash

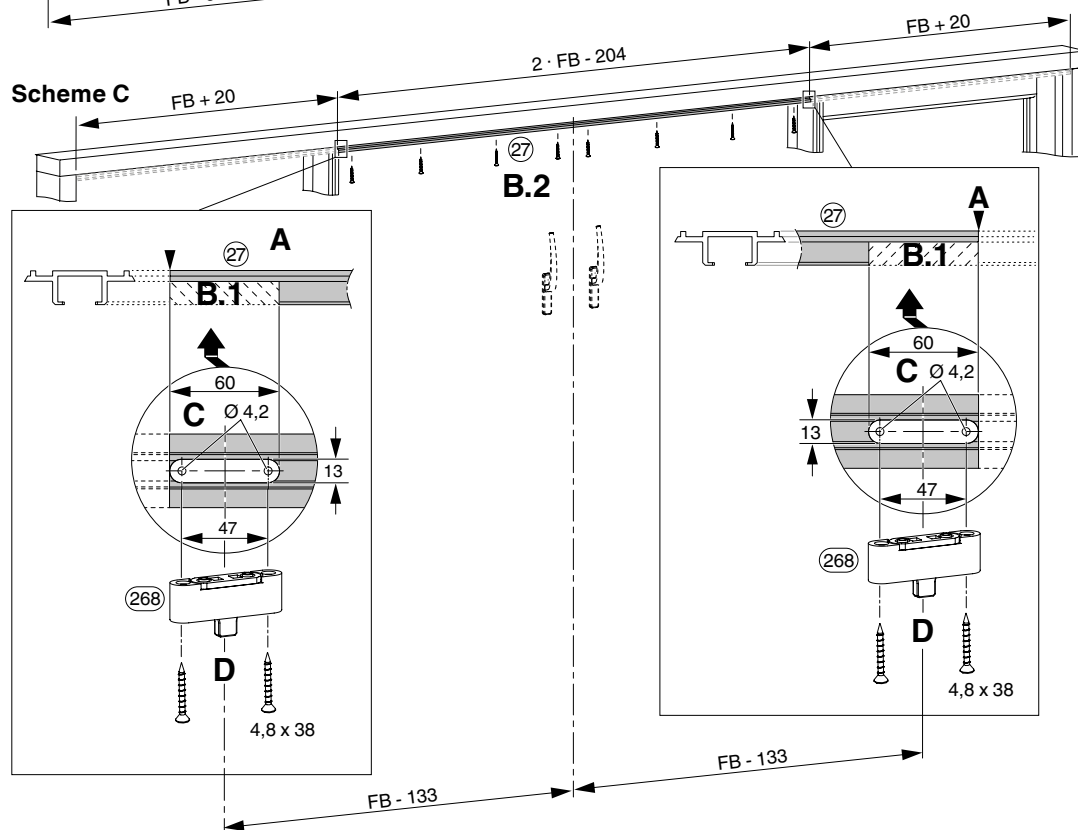
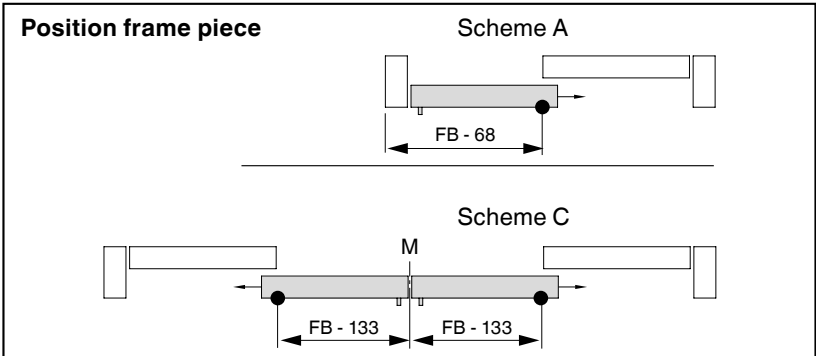
z) Colour of damper: size 1 - black, size 2 - silver-grey

# Preparation frame

Example: scheme A and C



- A** Divide guide track (27):  
 scheme A: handle side: FB - 111 mm, fixed sash side: FB + 20.  
 scheme C: passage area: 2.FB - 204, fixed sash: FB + 20.
- B** Mill or notch guide track on handle side for frame piece and fasten it.
- C** Pre-drill 2 fastening holes.
- D** Fasten frame piece (268).



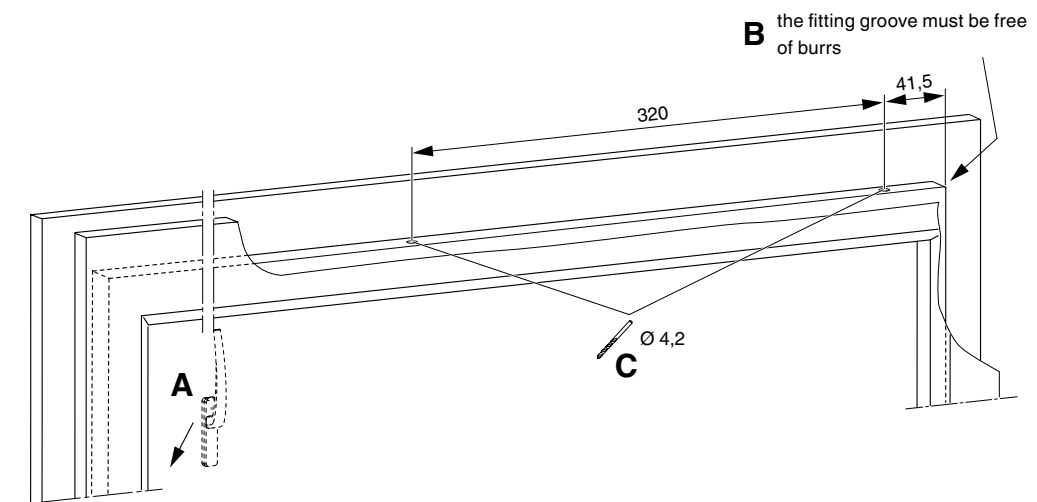
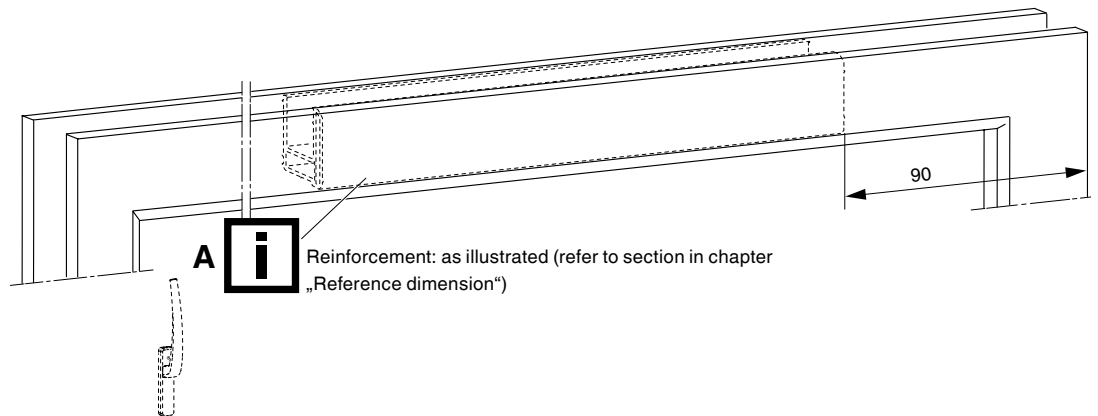
## Preparation sash

**A** Mounting of the Comfort Close at non-handle side.

**i** The reinforcement has to be within the area of Comfort Close.

**B** The fitting groove must be free of burrs.

**C** Pre-drill the holes with  $\varnothing 4.2$ .



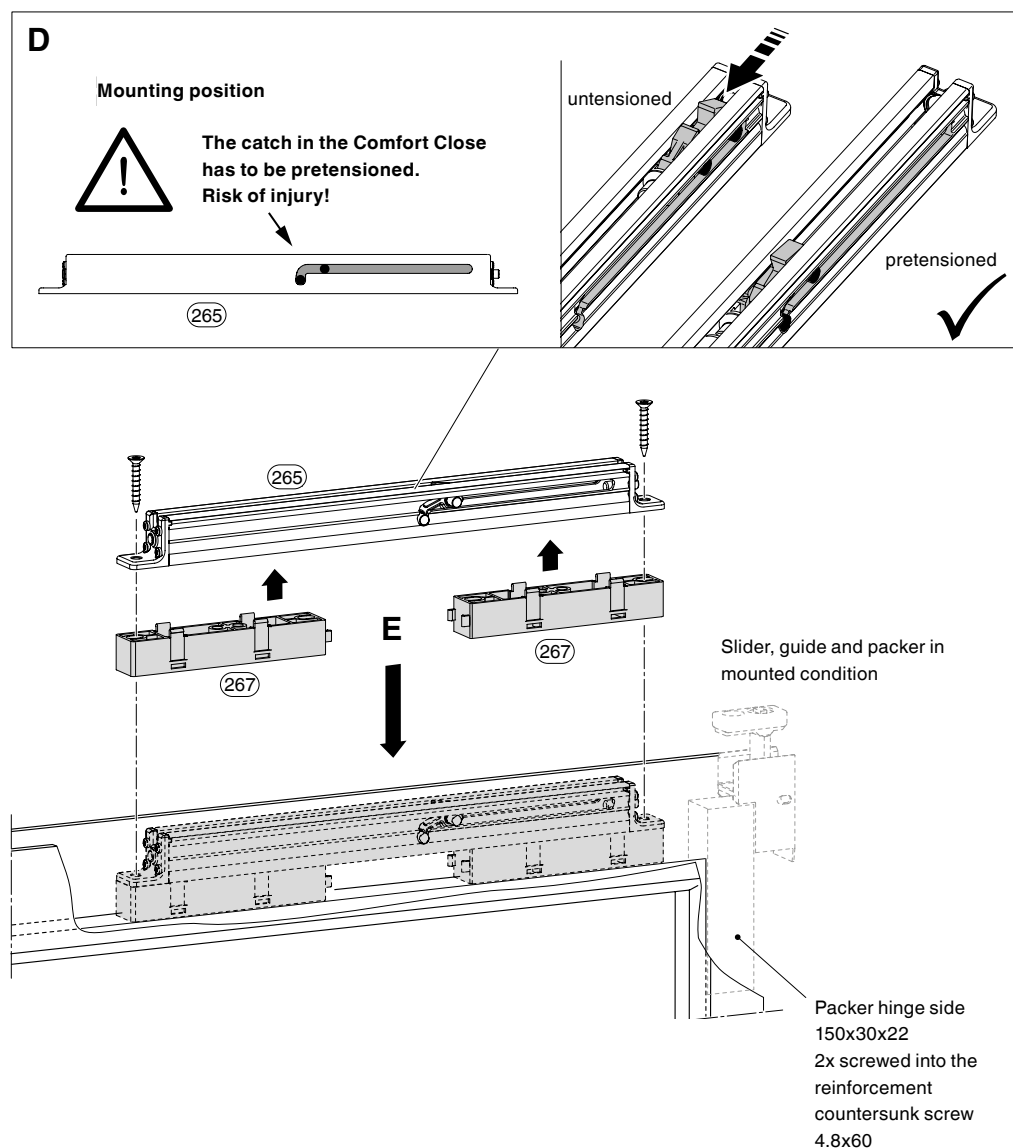
## Preparation sash

**D** Comfort Close (265) has to be pretensioned.

**E** Mount 2 packers housing (267) and fasten the drive at the sash.



**The Comfort Close has to be fixed at both ends within reinforcement. Otherwise the Comfort Close can be damaged while opening/closing the sash. Risk of injury!**

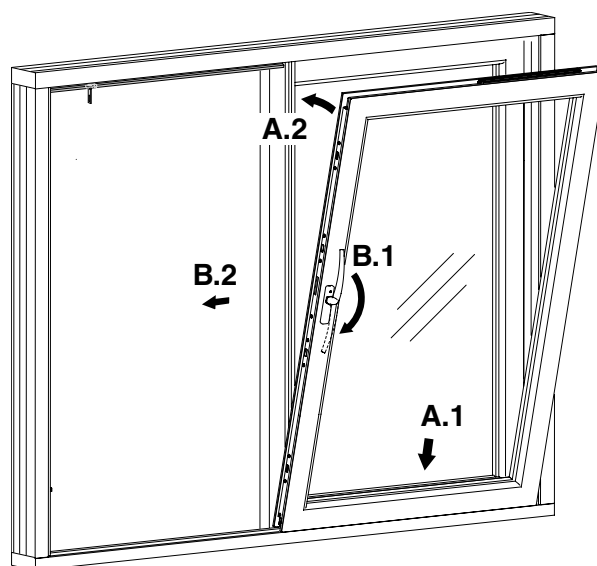


## Mounting sash and frame

- A** Set down the sliding sash onto the running track in the area of the fixed sash and swivel it into the element.
- B** Bring handle into „Open“ position and slide the sliding sash to the transit area.

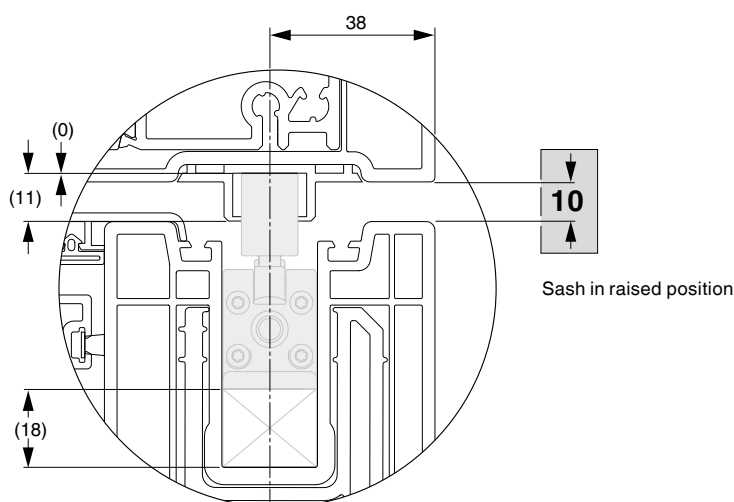


**Attention:**  
Risk of injury due to fallen sash!  
To avoid the risk of injury, perform the following steps with two workers.



## Reference dimension

- To check the height of the frame piece, swivel in the sash, lift it and slide into closing position.
- Measure reference dimension within the range of the Comfort Close (desired value = 10 mm).
- Lift the sash out, if necessary, and compensate deviation to the reference dimension with packers frame piece (269).
- Fasten guide track on fixed sash side.



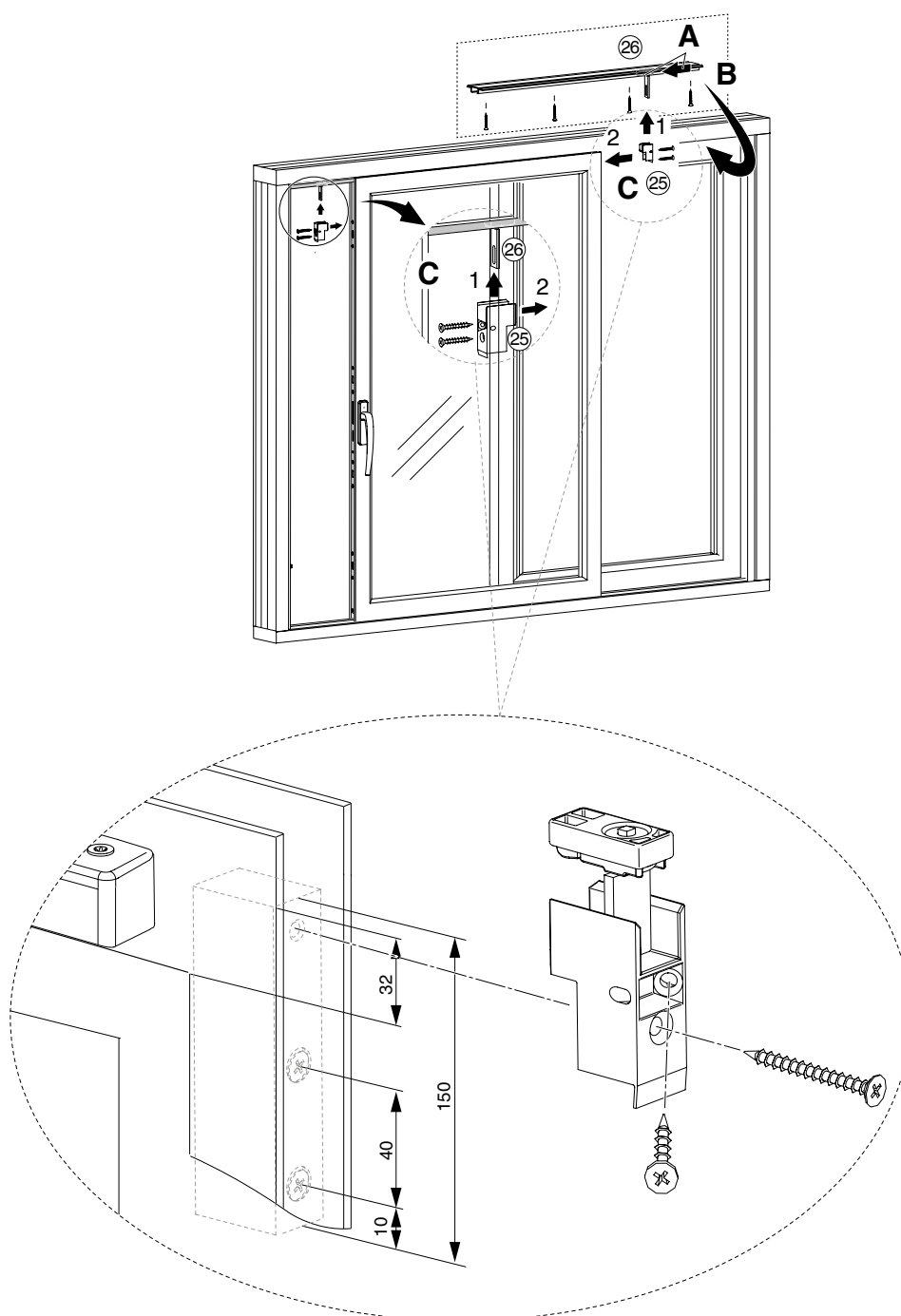
## Completion of guide track

**Example: scheme A; scheme C accordingly**

**A** Slide the slider (26) on non-handle side into the guide track on fixed sash side.

**B** Fasten the guide track at frame profile.

**C** Put both guides (25) onto the slider (26) and fasten by means of screws 4.8 x 45 into the dowels.





## Adjustment option

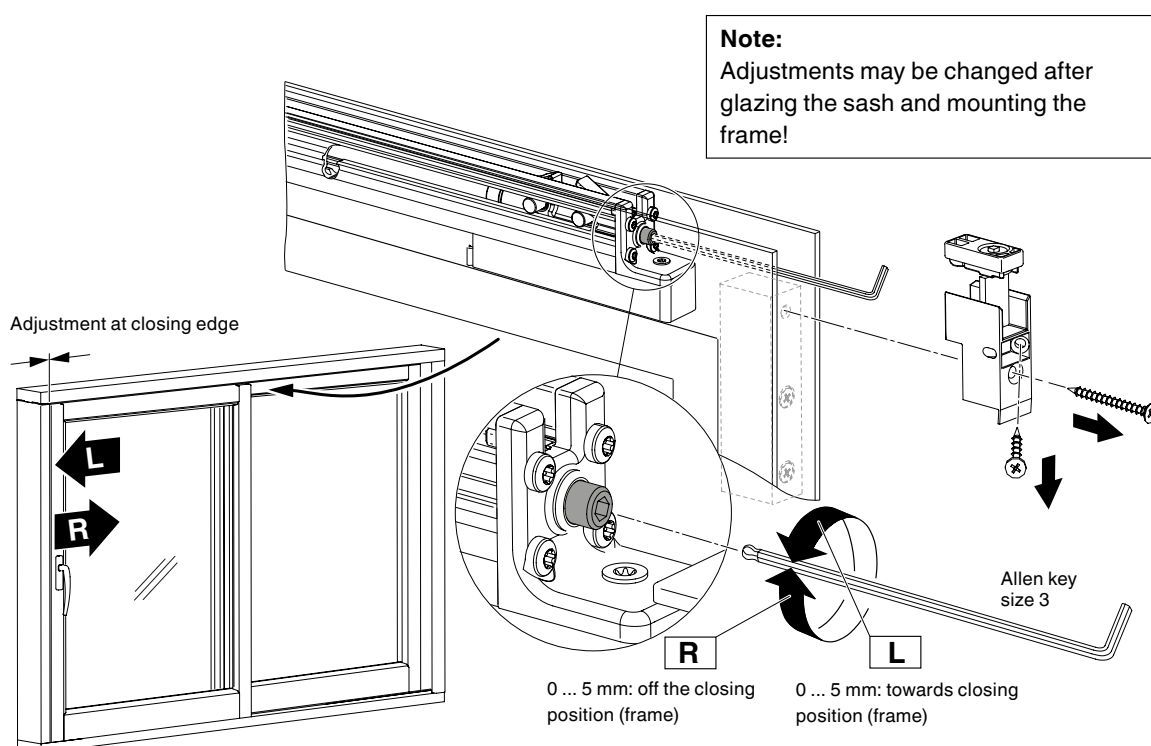
In case of inaccuracy concerning position of the frame piece, the end position of the sash related to the frame can be adjusted.

**L** (counter-clockwise rotation):

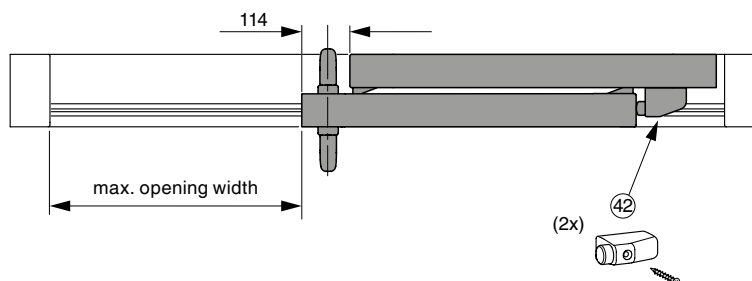
closing of sash will be shifted in direction of handle side (0 ... 5 mm).

**R** (clockwise rotation):

closing of sash will be shifted in direction of non-handle side (0 ... 5 mm).



## Limit opening width



## Technical data

### Range of application scheme A:

|  |  |
|--|--|
| Sash width (FB)                                    | 720 – 3310 mm  |
| FBmin. for 2x Comfort Close                        | 1000 mm  |
| Sash height (FH)                                   | 800/810 – 2910/2920 mm   |
| Outer frame width (RAB)                            | acc. to profile manufacturer's specifications                              |
| Sash weight or sliding force without Comfort Close | size 1: max. 200 kg or<br>max. 30 N<br>size 2: max. 300 kg or<br>max. 50 N |

Depending on version of the profile sealing to be used, it can happen, that the sash cannot close completely.

|  |  |
|--|--|
| Relevant dimensions Comfort Close (H x T)    | 27.5 mm x 22 mm  |
| Soft move-in                                 | starting approx. 100 mm off the closing edge             |
| Increase of sliding force with Comfort Close | size 1: by 25 N (black)<br>size 2: by 45 N (silver-grey) |

Range of application is depending on used profile systems. Specifications of profile manufacturers to be observed.



## Notes

A large rectangular area filled with a fine grid pattern, intended for taking notes.

**MACO  
RAIL-SYSTEMS**



**MAYER & CO  
BESCHLÄGE GMBH**

Alpenstraße 173  
A-5020 Salzburg

Tel.: +43 662 6196-0  
E-Mail: [maco@maco.eu](mailto:maco@maco.eu)  
[www.maco.eu](http://www.maco.eu)

## **Satisfied?**

We appreciate your  
[feedback@maco.eu](mailto:feedback@maco.eu)

Order No. 757737 - Date: January 2019  
All rights reserved and subject to change.  
Graphic source: MACO

This print document is revised regularly.  
The latest version is available at  
<http://www.maco.eu/sites/assets/MacoDocs/757723/757737.pdf>  
or by scanning the QR code

