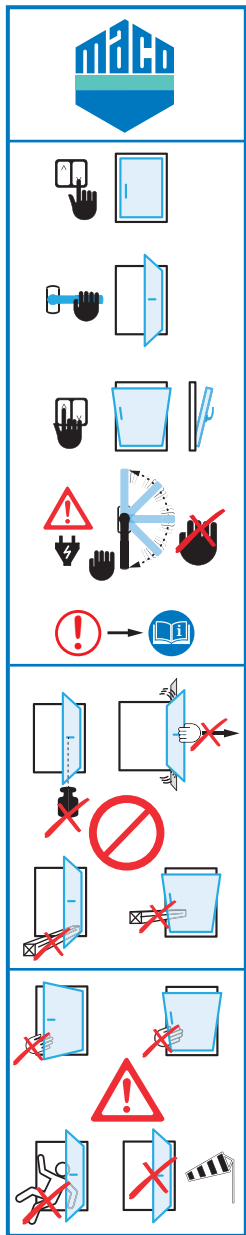
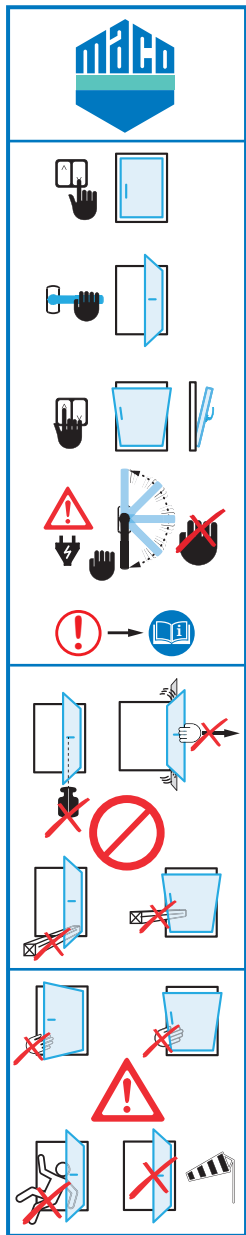


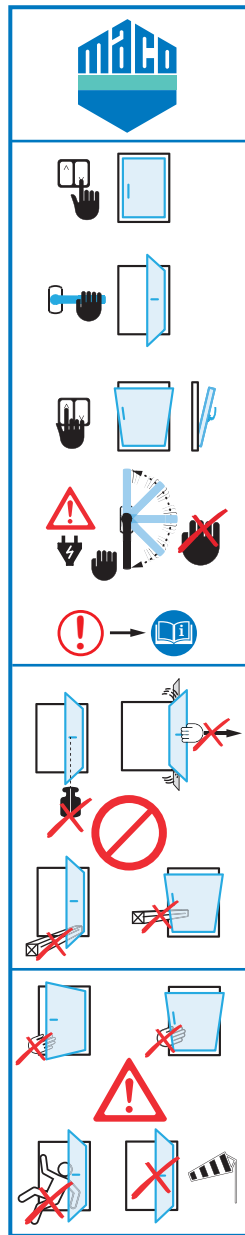
No. 757807



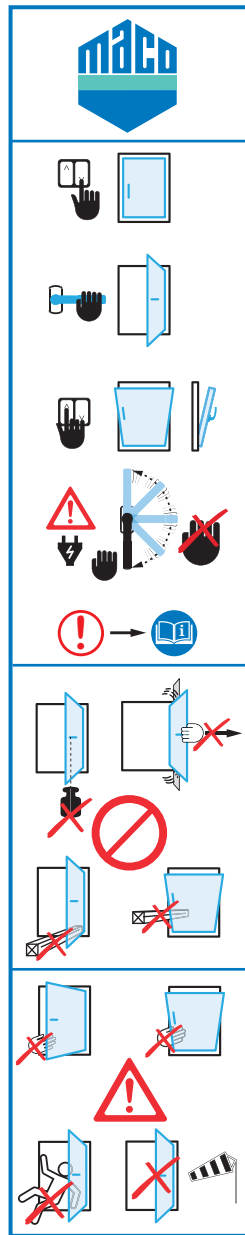
No. 757807



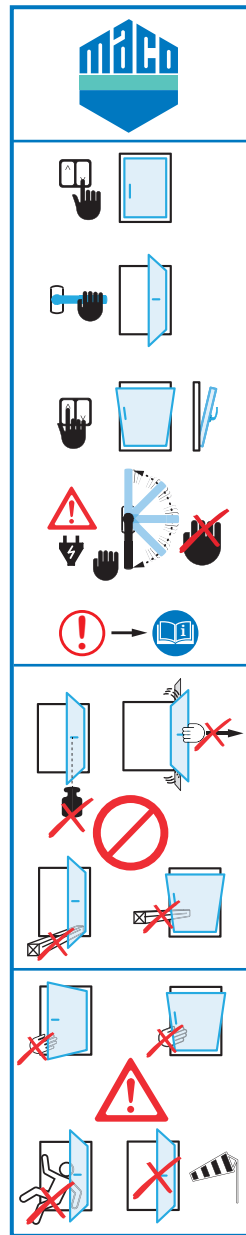
No. 757807



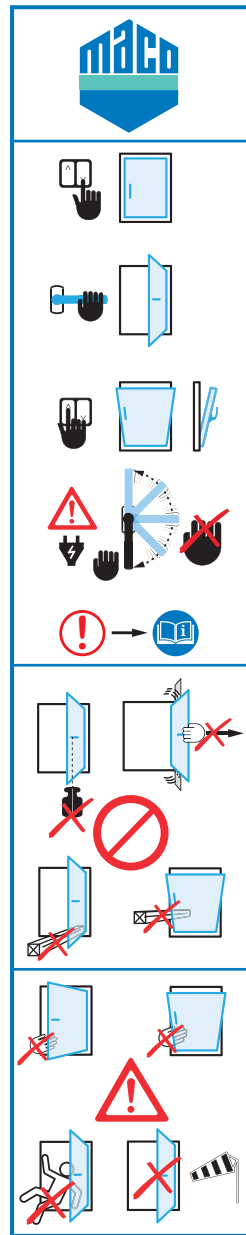
No. 757807



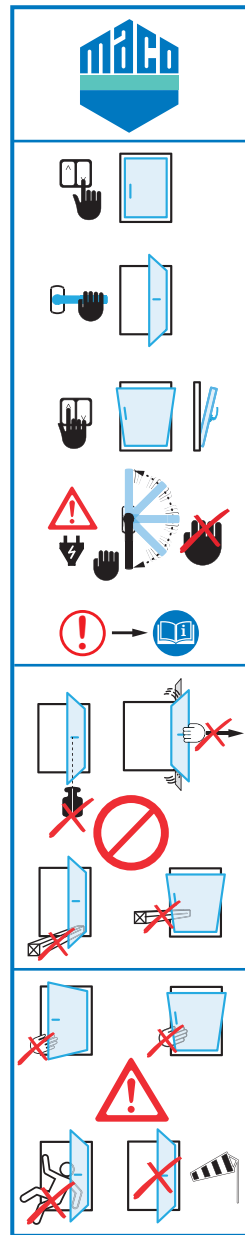
No. 757807



No. 757807



No. 757807



No. 757807



DE: Auf bedruckbarer, transparenter, ablösbarer A4-Klebefolie (z. B. Herma Art.-Nr. 12905, Zweckform Art.-Nr. L4735REV,...) ausdrucken. Aufkleber ausschneiden und neben dem Griff auf Glasfläche anbringen.

EN: Print out on printable, transparent, removable A4 adhesive film (e.g. Herma Item no. 12905, Zweckform Item no. L4735REV, ...). Cut out the sticker and attach it to the glass surface next to the handle.

FR: Imprimez sur un film adhésif A4 imprimable, transparent et amovible (par ex. Herma n° d'article 12905, Zweckform n° L4735REV, ...). Découpez l'autocollant et fixez-le à la surface de verre à côté de la poignée.

IT: Stampare carta A4 adesiva, trasparente e removibile (es. carta Herma Art.-Nr. 12905 oppure Zweckform Art.-Nr. L4735REV,...). Ritagliare gli adesivi e fissarli sul vetro, vicino alla maniglia.