



TECHNOLOGY IN MOTION

Welcome to our World of Doors

Our solutions for your timber, PVC and aluminium doors



TIMBER

PVC

ALUMINIUM

Contents

Our promise	4
Our locks	6
Instinct by MACO – fully electronic	6
M-TS Motorised lock	8
A-TS Automatic lock	10
Z-T Semi-automatic lock	12
Z-TS Security lock	14
G-TS, G-TA, C-TS, handle-operated locks	16
Our accessories	18
Faceplate variants	20
Components and options	22
Our surfaces	26



A passion for detail Still seeing the big picture

Some prioritize extra security and some value convenience, while others are focused on barrier-free access. Everyone, however, wants a door that's energy-efficient, airtight and burglar-resistant. One that provides protection while still providing the house with high curb appeal.

With our lock solutions and extensive range of accessories, you are all set to demonstrate your expertise when it comes to doors. Customised doors, tailor-made to the wishes of your customers yet all manufactured in series production and from a single source.



Our promise Your benefits



Security

We specialise in burglar resistance and retrofitting. Trust in our years of experience in mechanical and electronic engineering.



Accessibility

We help you eliminate obstacles from your life with zero thresholds and easy-to-operate and automated elements.



Energy efficient

Improve your environmental impact with sustainable windows with gaskets and thresholds that perfectly match the hardware.



Surface protection

Silverlook-Evo and Tricoat-Evo make hardware even more resistant, durable and smooth-running for added convenience during installation and operation.






Smart Home

Our smart building components make living more comfortable and secure. Ask us for details.



Partnerships

We support you from the initial enquiry through to after-sales service. Our employees are at your side.



Your success Our service

As your full-service provider, we are at your side throughout the entire process, from element design to after-sale support. We help you with services relating to standards, products and digitalisation, and we are here to answer any questions you might have.



Your benefit Our sustainability

Sustainability is the basis for construction that is ready for the future. You can rely on us: as your supplier, we understand sustainability holistically – ecologically, socially and economically. The Austrian »Circular Globe« label, for example, certifies our efforts regarding the circular economy according to strict criteria.



Instinct by MACO

Fully electronic locking system

Revolutionise your door design with the innovative technology of Instinct by MACO, which offers unique design options. There are almost no limits placed on door height, width or shape. The locking components can be installed in the sash as well as in the frame. This allows especially narrow profile views and ensures a clean door front.

Implement unique pivot doors with locking on both sides of the door. This achieves unrivalled airtightness and security.



TIMBER

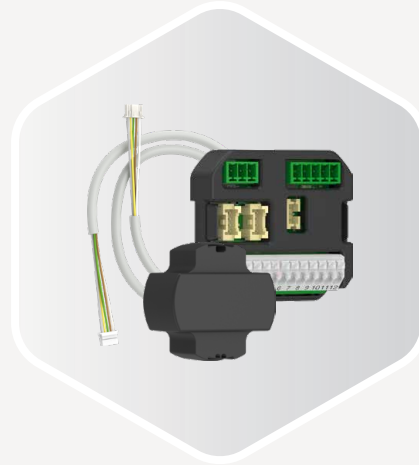
PVC

ALUMINIUM



THE LOCK WITH THE HORSE'S HEAD

Ensures high contact pressure and secure locking



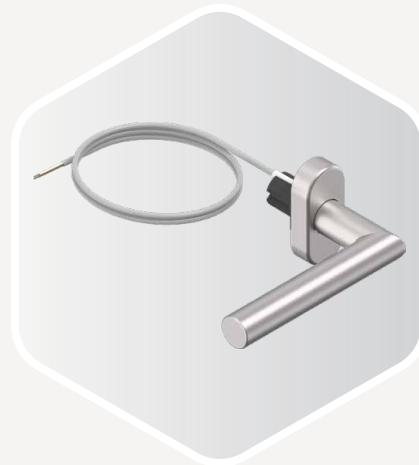
ELECTRONIC ACCESSORIES

System cables, cable transitions, gateways and power supply units. Everything from a single source!



EMERGENCY POWER SUPPLY

Guaranteed at all times thanks to a USB-C power bank

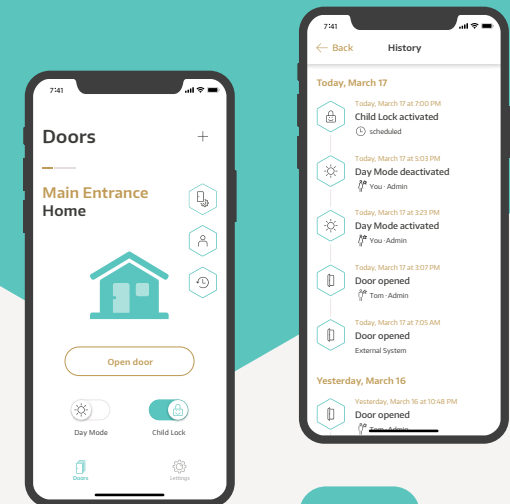


ELECTRONIC HANDLE

Convenient one-handed operation – as with conventional locks

Instinct App Intuitive access control

...for cleaning services, neighbours or tradesmen. You can open the front door conveniently via the App or assign authorisations for spontaneous one-time access, time-limited access or daytime unlocking. Optional child safety lock and a complete log of door openings ensure top security and control.



INSTINCT
MOBILE APP

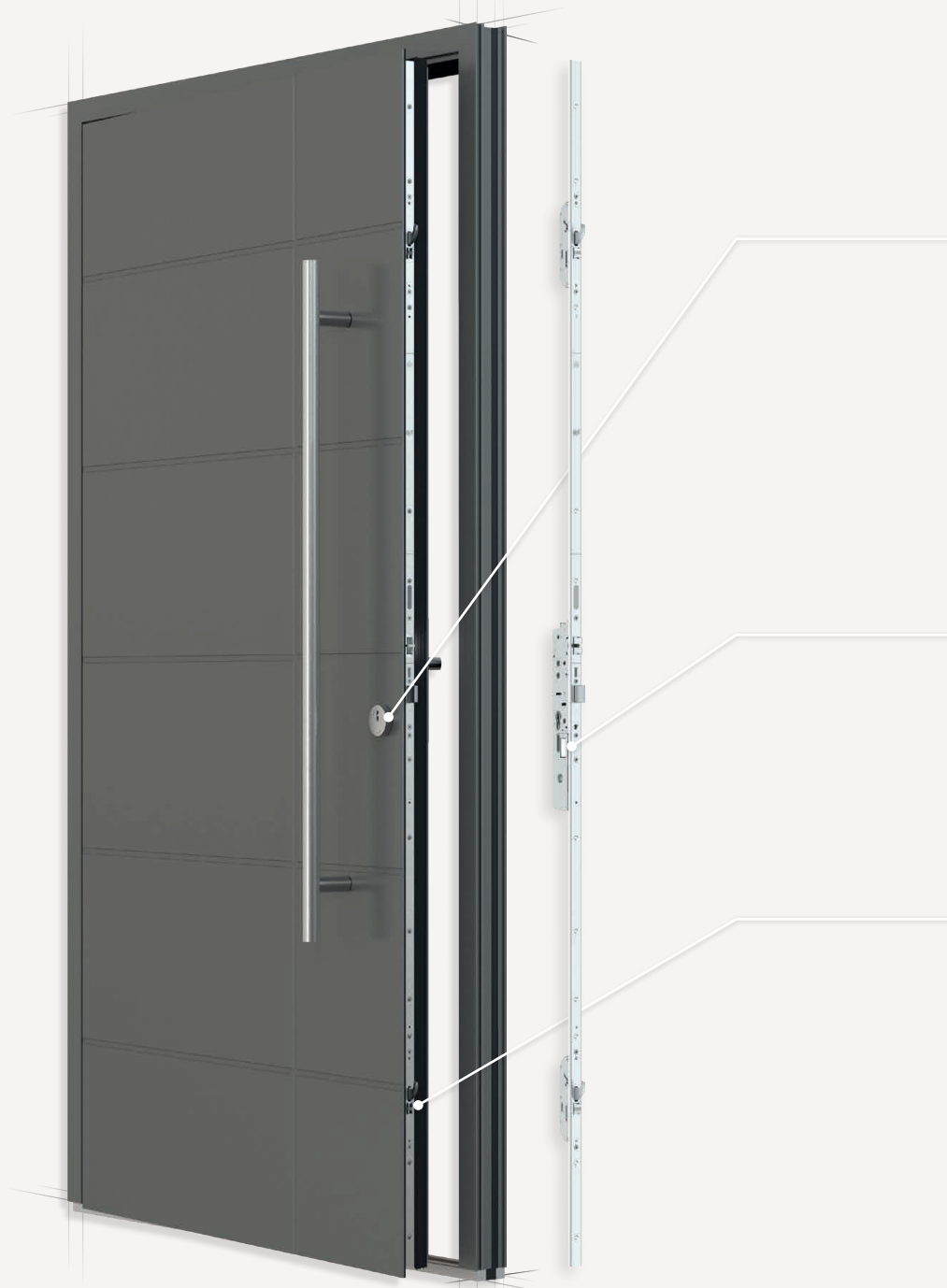
M-TS

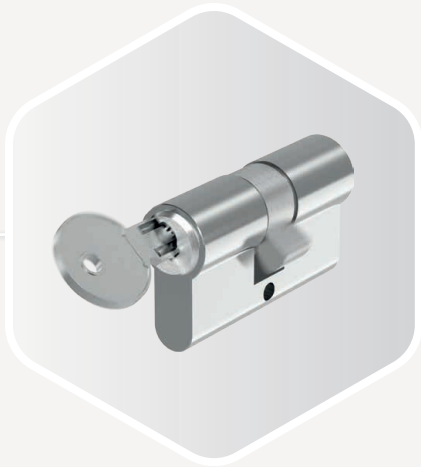
The fastest motorised lock

If you want to maximise convenience and speed, the MACO motorised lock is just right for you.

The sophisticated technology of the M-TS ensures you a clear competitive advantage. The location of the motor directly next to the main lock case enables it to achieve world-beating speed. The M-TS offers homeowners unprecedented convenience in terms of opening speed and options in intelligent access control, and MACO triple latch technology ensures ideal closing force and security.

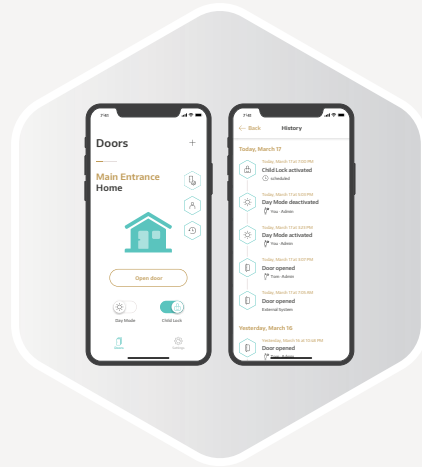
And one more thing: closure monitoring is integrated in the M-TS as standard.





STANDARD CYLINDER INSTEAD OF FREEWHEEL CYLINDER

As the drive motor is decoupled from the cylinder



CONVENIENT OPENING

and access control via the Instinct App



TRIPLE-LATCH TECHNOLOGY

For high closing force and energy efficiency



MOTOR RIGHT NEXT TO THE MAIN LOCK CASE

That makes the lock so fast and quiet and requires only one milling operation



No panic at the emergency exit

With the M-TS and the A-TS lock, you can also implement single-leaf emergency exit and panic doors in accordance with EN 179/1125 (with shift function E).

A-TS

The self-locking automatic lock

It's the only automatic door lock that locks when closing the door. A-TS throws all its locking points and the deadbolt just by closing the door. This highly convenient feature has been recognised by insurance companies and certified by the German Insurance Association.

Utilising MACO triple latch technology, A-TS enables perfect closure from the top of the door to the bottom, ensuring exceptional gasket compression and reducing the chances of your doors bowing.

To add motorised or keyless unlocking capabilities to the A-TS, simply add the motor.



**COMFORT MOTOR
FOR A-TS**





LOCKING BAR

Extends automatically and locks keylessly



CONVENIENT OPENING

Via finger scan, code entry or Instinct App



TRIPLE-LATCH TECHNOLOGY

Controls the contact pressure separately from the locking mechanism



DAYTIME UNLOCKING

Use the electronic opener and activate the faceplate slider

Smart home capable

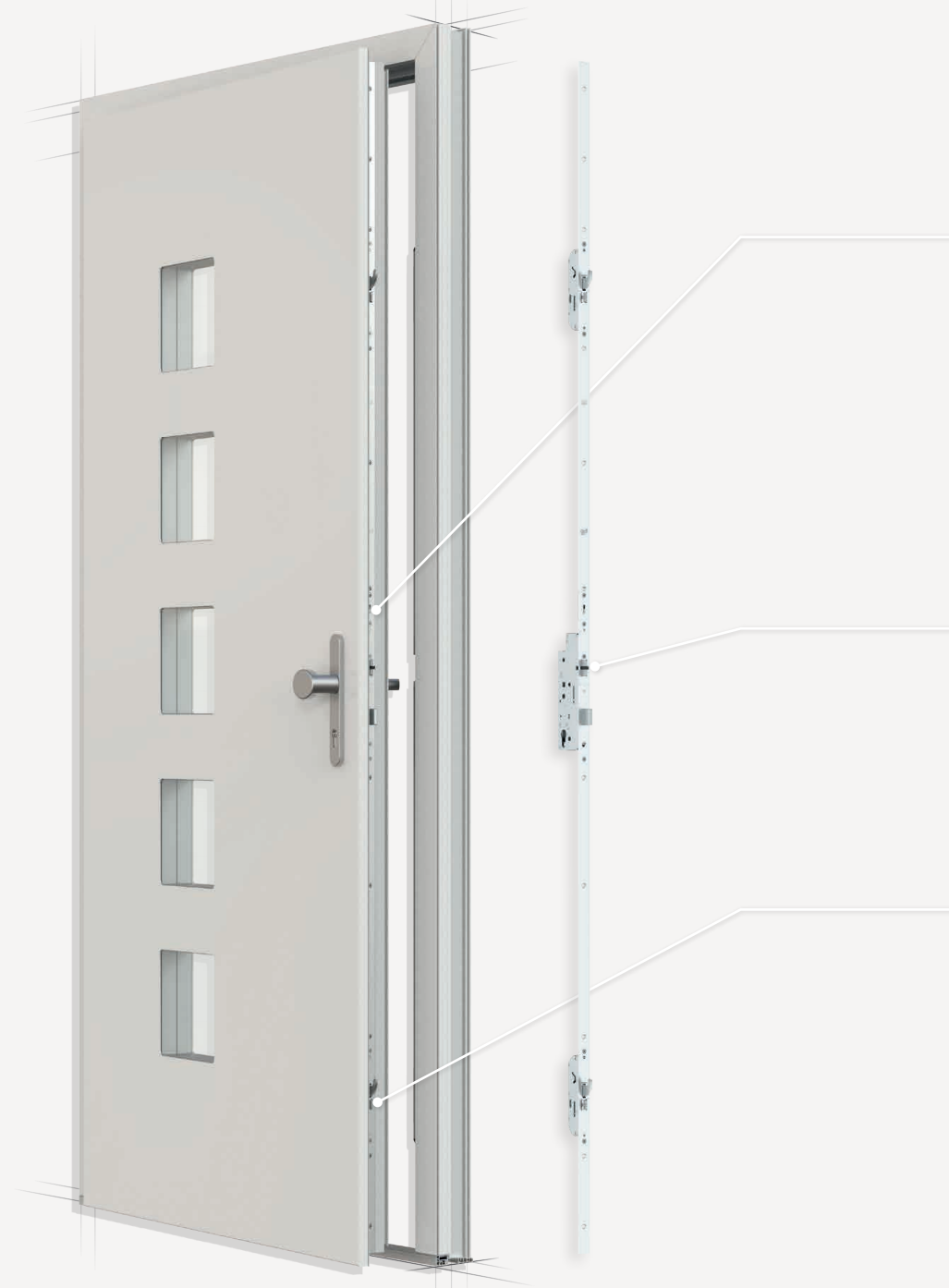
- › If you want to combine secure locking with convenient opening, simply add the motor to the A-TS and combine it with plug-in access solutions.
- › To make it smart-home compatible, simply add closure monitoring with bolt switch contact and integrate it into conventional alarm systems or smart home systems. All certified by the German Insurance Association.



Z-TF

The semi-automatic door lock

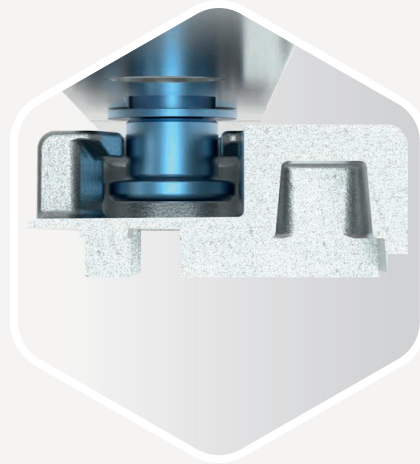
The triple-latch lock with crank latch ensures perfect contact pressure and quiet, secure closing. Automatically airtight, manually locked – that's what makes this tried-and-tested lock a classic in the Protect family. The new version, which includes MF-HO locking (multifunctional latch and hooks), is based on the same platform as the A-TS and M-TS locks. You'll score extra points with your customers by being able to offer them a range of models with this lock.





EASY DAYTIME UNLOCKING

With just one electronic opener instead of three



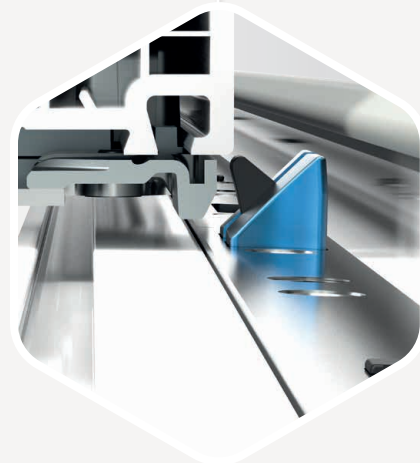
SAFETY PIN

Practical, safe, versatile – Z-TF with up to 4 safety cams as an alternative to hook locking



TRIPLE-LATCH TECHNOLOGY

Achieves superior airtightness



CRANKED LATCH

For smooth and quiet closing

One striker plate platform covering multiple locks

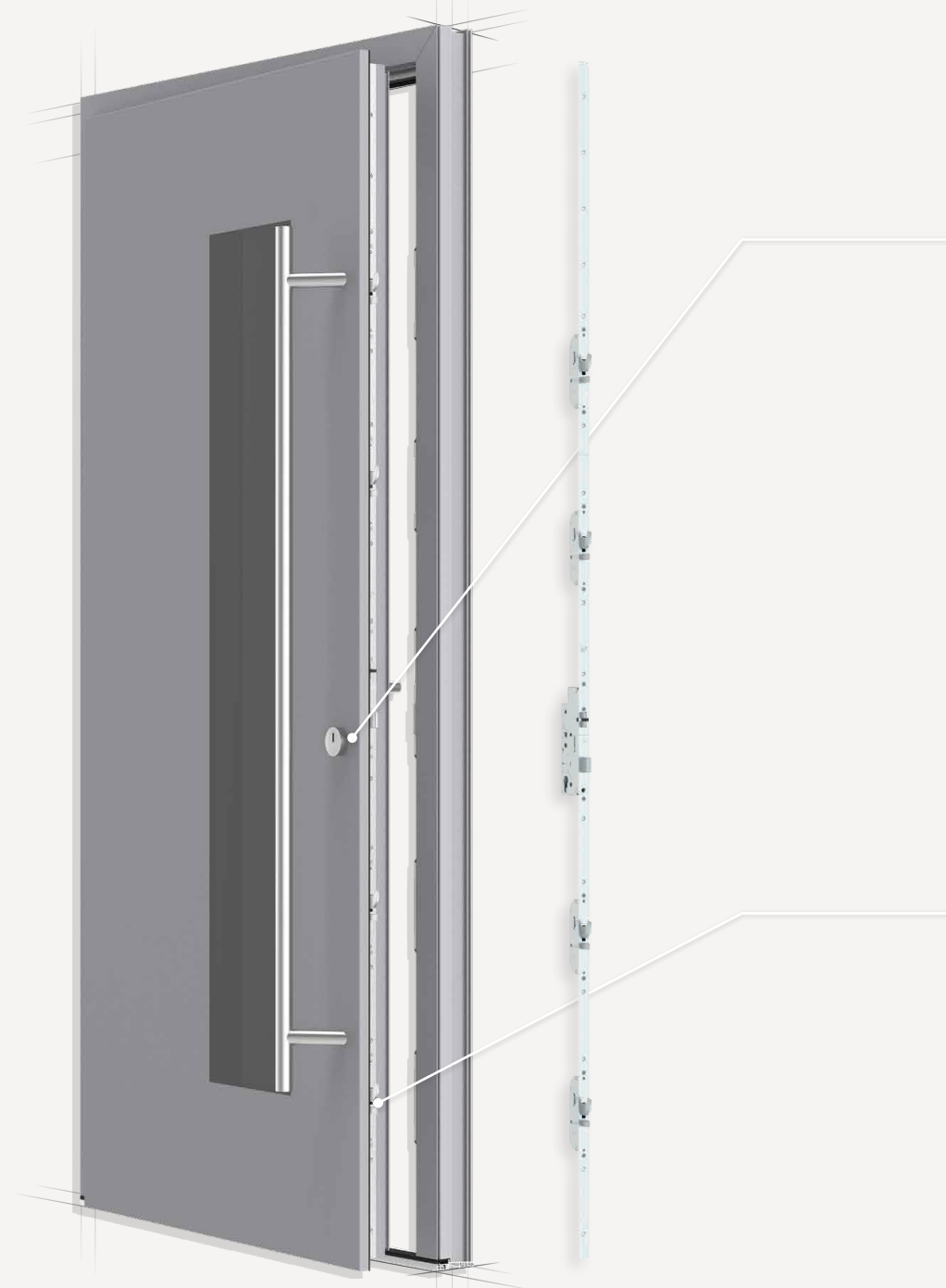
Why make it complicated if it can be done easily? Whether semi-automatic, fully automatic or mechanical – every lock with the MF-HO closure is based on the same striker plate range. This means you can produce A-TS and M-TS on the same basis and increase your productivity.

Z-TS

The smoothest security lock

Without the shadow of a doubt, our Z-TS lock is the smoothest drive gear lock base on the market. It just keeps working perfectly, and is as reliable as a Swiss watch.

That's not all. It's ultra-secure too. The gear and cranked latch deliver smooth operation, while the main lock case and four additional lock cases, with their hook and bolt combination, make the lock highly burglar-resistant. In fact, it's so secure that it's the first door lock to be included in the German police force's list of burglar-resistant product manufacturers.



TIMBER
PVC
ALUMINIUM



SMOOTH TO USE
hard to break into



**RC 2 SECURITY
WITH MINIMUM EFFORT**
Four security cams for
RC 2-capable doors



LOCKING
Hooks, bolts or security
cams possible



**VARIABLE LENGTH
END PIECE**
For double-leaf doors

How high and secure should it be?

With the Z-TS, you benefit from a modular system that allows you to implement any door height – simply and quickly from XS to XL, up to a height of 3,100 mm.

With faceplate modules, you can also implement your customers' individual security requirements simply and flexibly. More details on page 23.

Handle-operated door locks

Other countries, other customs. Handle-operated door locks stand out with their versatile functions and customisation options. They set standards in security and design.

G-TS – Module lock

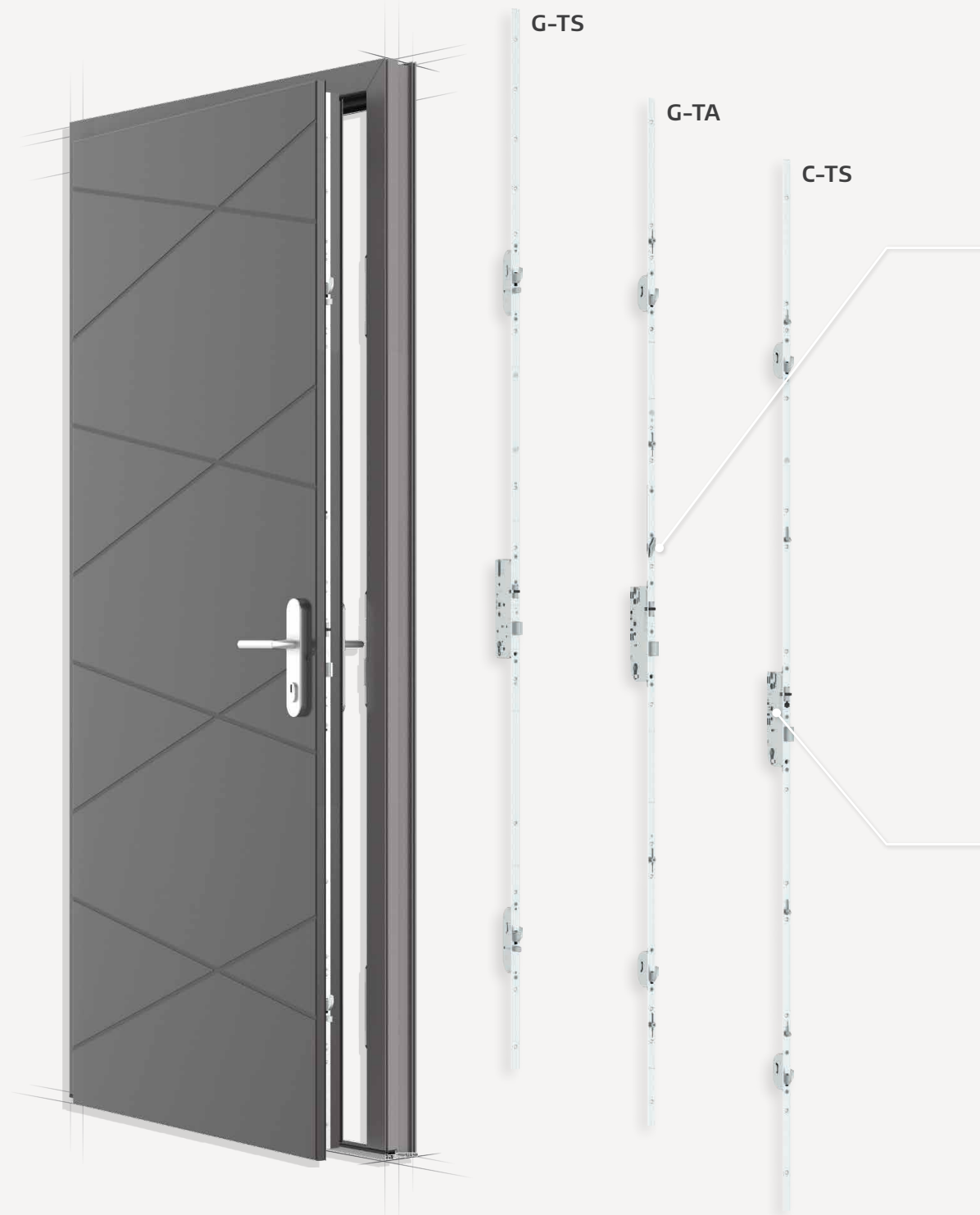
The G-TS, our bestseller, enables customised door heights of up to 3,100 mm and offers optimum flexibility with hooks, bolts or security cams.

G-TA – Automatic lock

The G-TA, the classic in the French market, combines automatic locking via the release rocker with manual locking using a key.

C-TS – Handle and switch operated lock

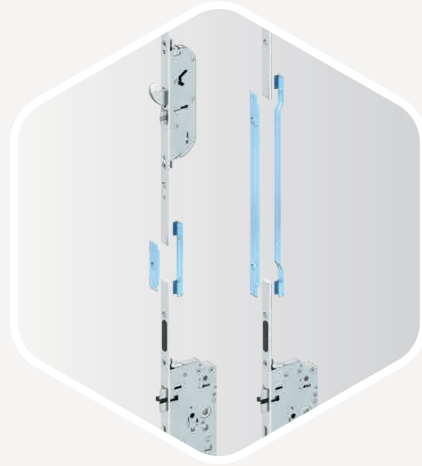
Specially developed for the UK market, the C-TS combines handle and switch actuation in one – without extra components.





LATCH

The G-TA triggers the locking mechanism when closing



MODULAR CUSTOMISATION

The G-TS can easily be adapted to various door heights



HANDLE AND ALTERNATE OPERATION

The C-TS combines handle and switch actuation thanks to the bolt handle



RC 2 SECURITY WITH MINIMAL EFFORT

4 security cams for RC 2-capable doors



The B-TV balcony door lock

With the B-TV balcony door lock, balcony and side entrance doors can also be conveniently operated from the outside. Locking is done with a key.

Easily fabricated: B-TV can be combined with MACO's Multi Matic hardware.





Our range Everything for your door

From locks to seals, thresholds and accessories – we make your doors complete and help you stand out from the competition. Do you need something that is not in our range? Then we will work with you to develop new solutions – perfectly tailored to your customers' needs.

Attractive looks

Faceplates worth seeing

Faceplates are more than just cover trims. They give the door an appealing look and are available for various systems and profile geometries. Check out the illustrations. Our models from left to right are: the top hat faceplate, round end faceplate, flat faceplate, and U faceplate.

The unique top hat faceplate puts an attractive face on the locking mechanism and is a fabricator's best friend. Why? It elegantly covers up any milling inaccuracies. These disappear behind the overlapping top hat faceplate and dirt build-up becomes a thing of the past. It's not just a pretty face. It also boosts security by adding more stability and even better results in burglar-resistance tests.

TOP HAT FACEPLATE



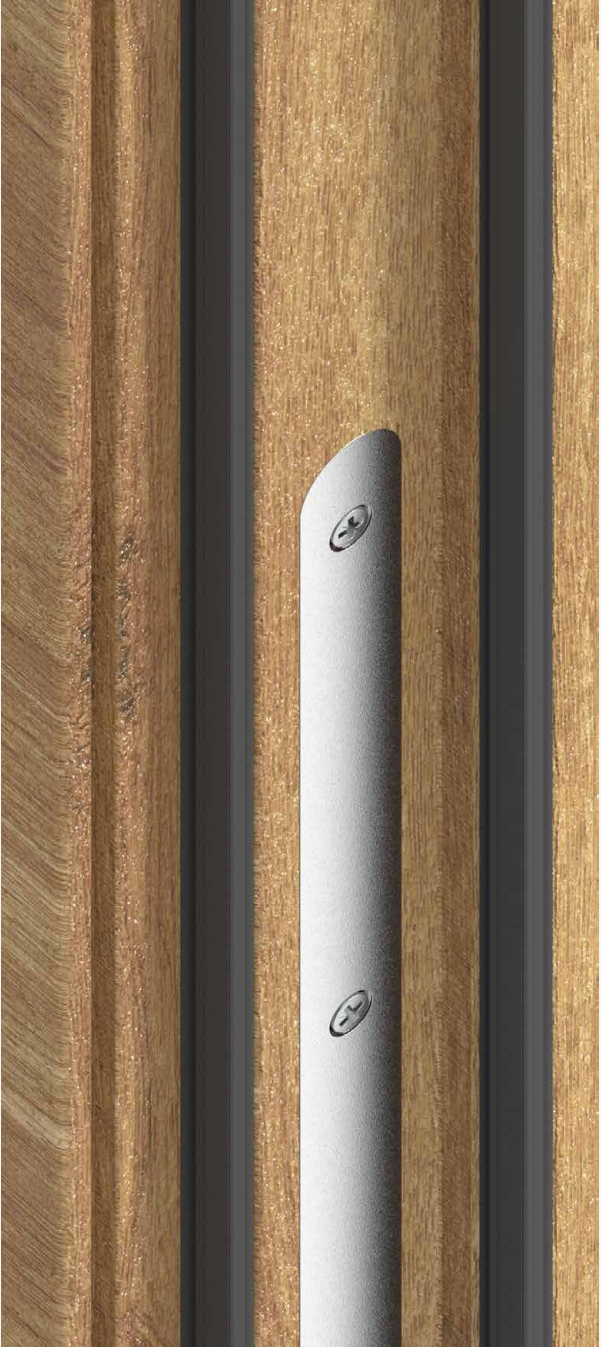
FLAT FACEPLATE



U-SHAPED FACEPLATE

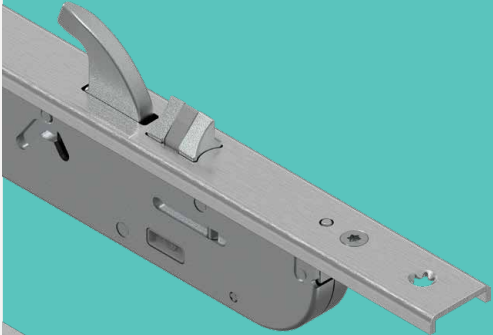


ROUND FACEPLATE

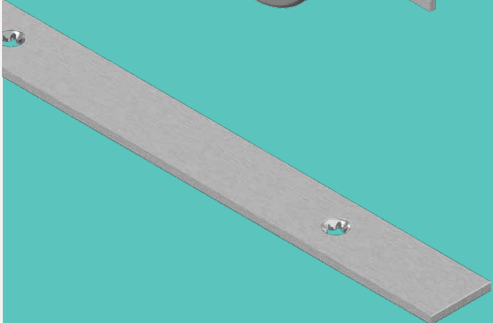


Stainless steel desired?

U faceplate and flat faceplate (F-24) are now also available in stainless steel.



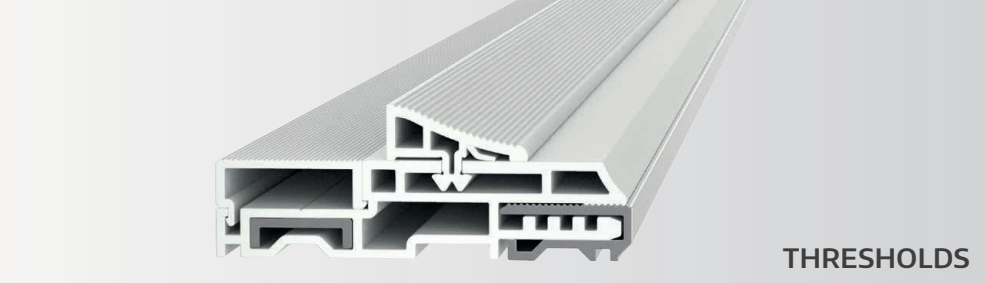
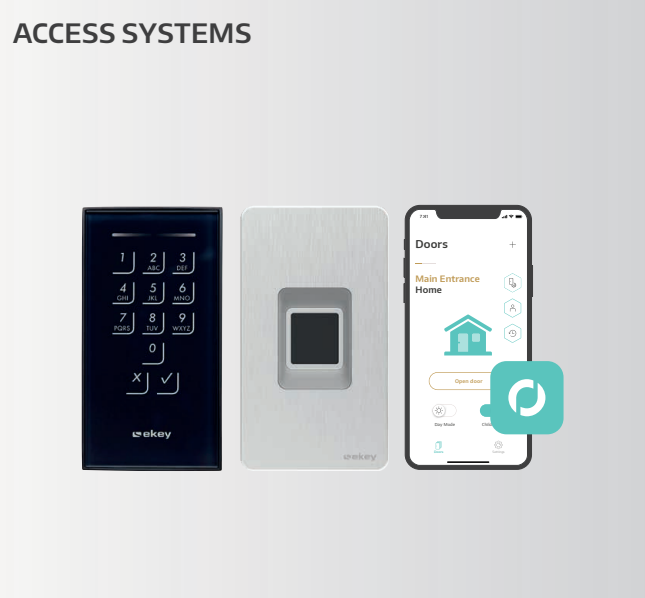
U FACEPLATE



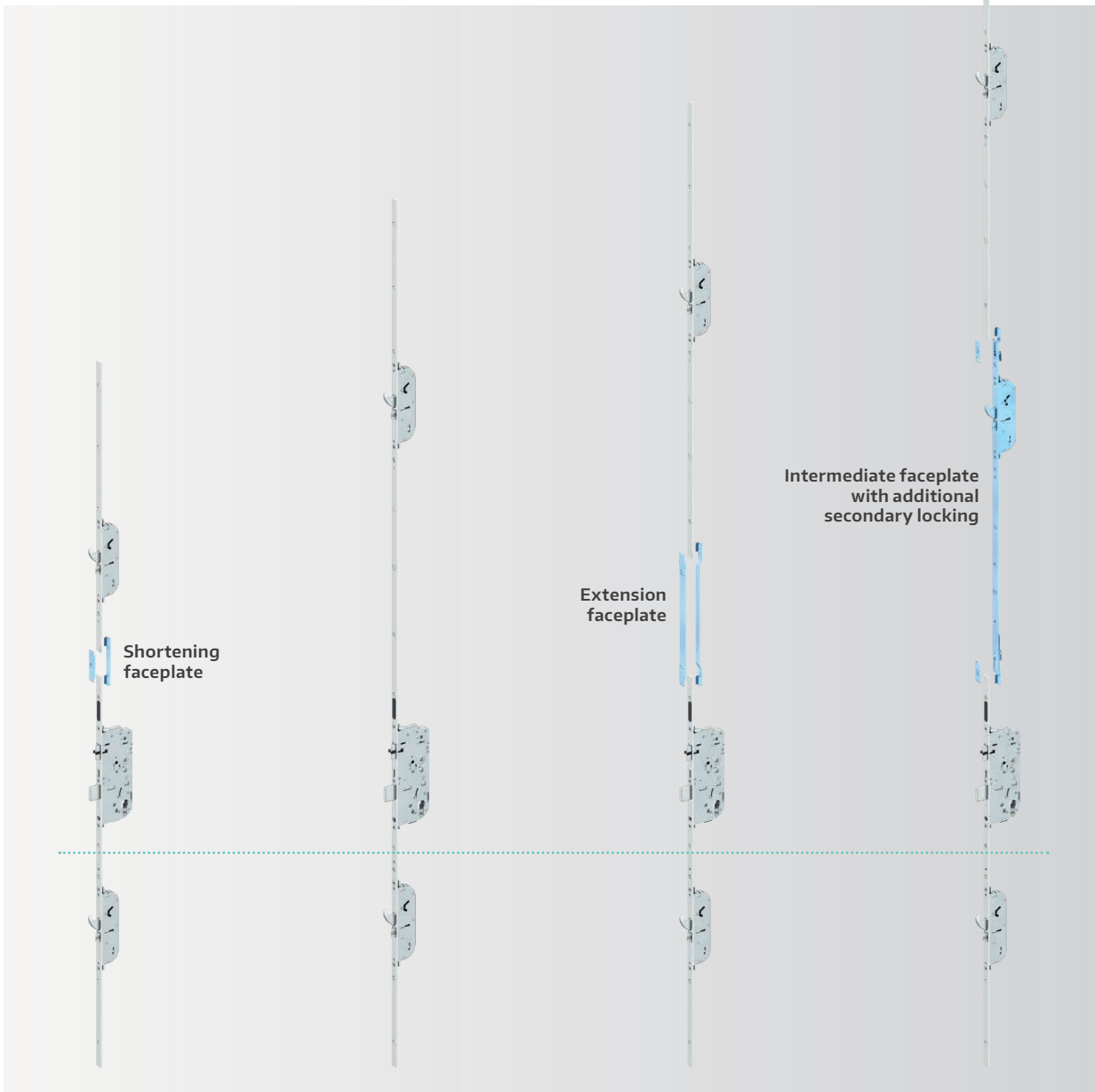
FLAT FACEPLATE F-24

Door components

Everything from a single source

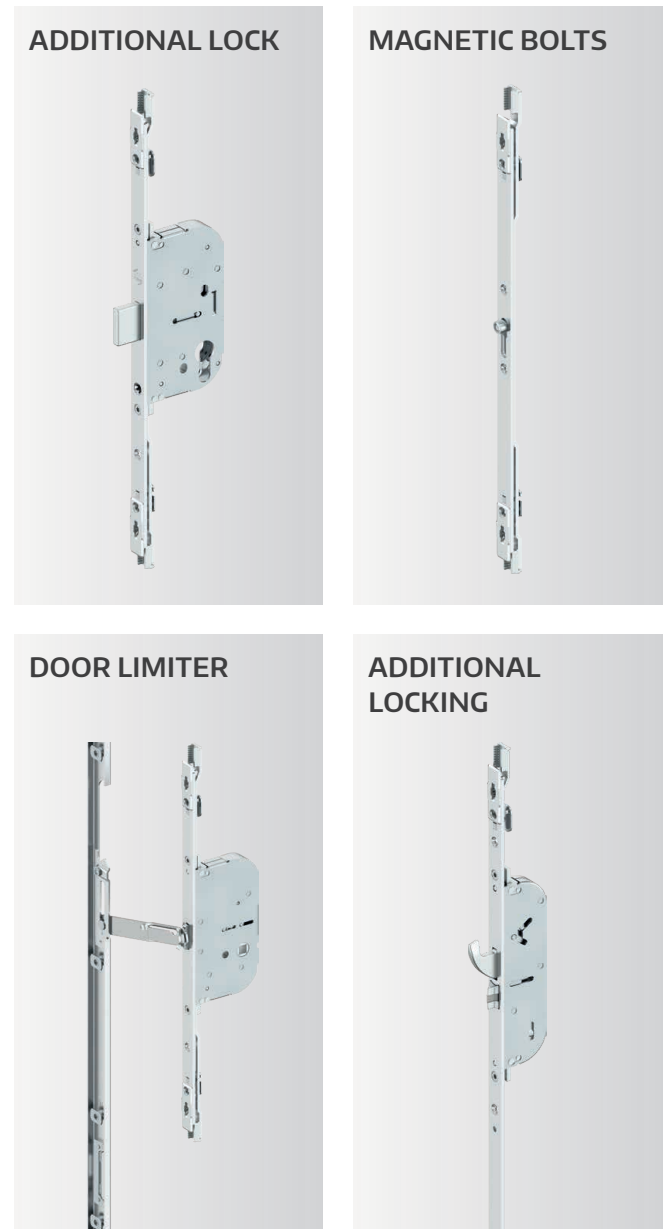


Modular faceplate lengths Which size suits your door?



Modular customisation is possible with A-TS, Z-TS and G-TS.

Modular security How secure does it need to be?



STRIKER PLATE PLATFORM

TIMBER



PVC



ALUMINIUM












The range

An overview

CYLINDER-OPERATED

HANDLE-OPERATED

		INSTINCT	M-TS	A-TS	Z-TF	Z-TS	G-TS	G-TA	C-TS	B-TV
										
CENTRAL LOCKING FUNCTION	Contact pressure	motorised	automatic	automatic	automatic	manual	manual	automatic	manual	manual
	Locking	motorised	motorised	automatic	manual	manual	manual	manual	manual	manual
	3-latch technology	–	•	•	•	–	–	–	–	–
ADDITIONAL FEATURES	Access control	electronic	electronic	electronic	–	–	–	–	–	–
	Closure monitoring	integrated	integrated	optional	optional	optional	optional	optional	optional	optional
	Optional day release	motorised	motorised	manual	manual	–	–	–	manual	–
	Modular customisation	•	–	•	–	•	•	–	–	–
	RC 2-compliant	•	•	•	•	•	•	•	•	•

The surfaces

An overview

Tricoat-Evo

When it has to be robust

Extreme areas of application require extreme protection. Whether in a coastal climate or acidic woods – with Tricoat-Evo, you have the right coating. Easy to use and particularly resistant to multiple influences.

Silverlook-Evo

Good protection as standard

At MACO, self-healing and self-lubricating Silverlook-Evo is standard. The coating with nanocapsules fills in small scratches, increases ease of use and makes hardware more durable and more resistant to corrosion.



Coating structure

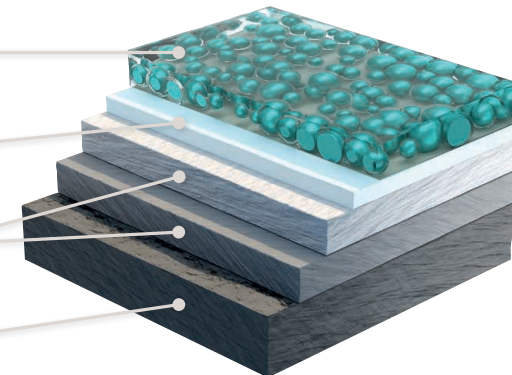
Tricoat-Evo

Tribological sealing with nanocapsules (Evo)

Thick-layer passivation

Extremely strong duplex coating: up to 600 HV (hardness according to Vickers)

Steel or Zamak





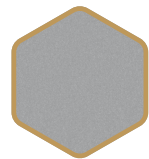
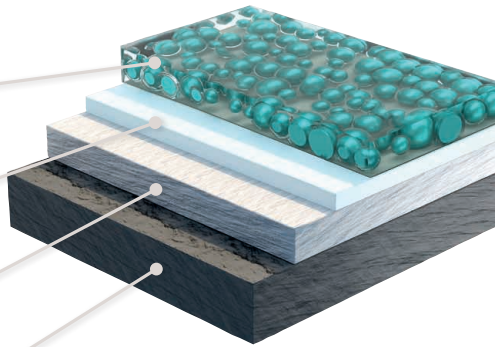
Coating structure Silverlook-Evo

Tribological sealing with nanocapsules (Evo)

Thick-layer passivation

Microcrystalline electrogalvanising

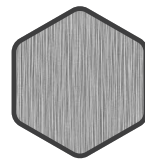
Steel or Zamak



TRICOAT-EVO



SILVERLOOK-EVO



STAINLESS STEEL

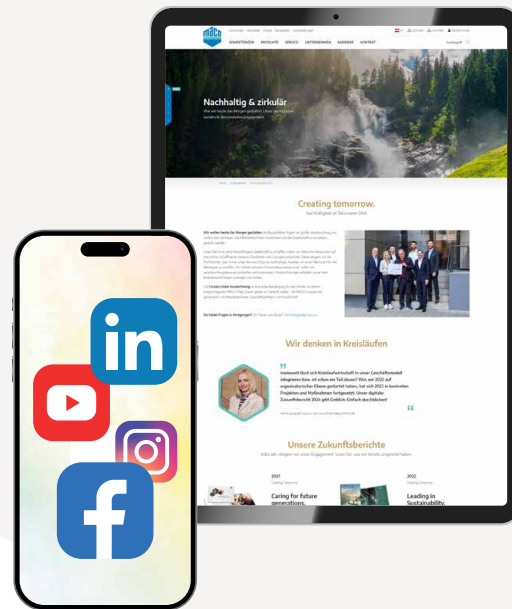
Stainless steel For the elegant touch

Do you manufacture aluminium systems? Then stainless steel faceplates with a high-quality brushed surface are the ultimate in quality and design.



Would you like everything from a single source?

We provide you with hardware solutions for your large surfaces, windows and doors – for timber, PVC and aluminium. Experience our versatile range of systems, with comprehensive service included. Discover more on our website www.maco.eu or contact your MACO customer advisor. Follow us on social media for the latest news.



MACO near you:
www.maco.eu/kontakt



This document is constantly being revised.
You can find the current version at <https://www.maco.eu/assets/757988>
or by scanning the QR code.

Created: 02/2020 – Modified: 15.03.2024
Order no. 757988
All rights and amendments reserved.