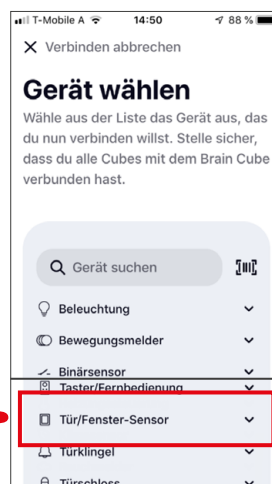
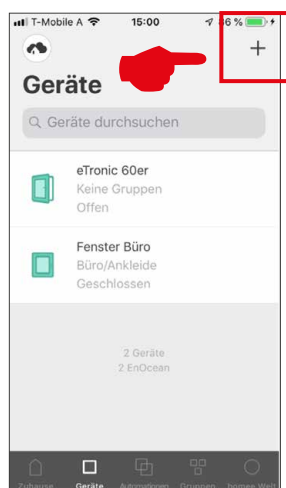


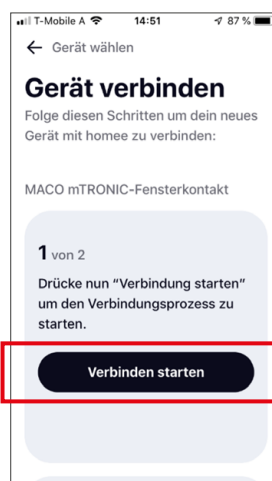
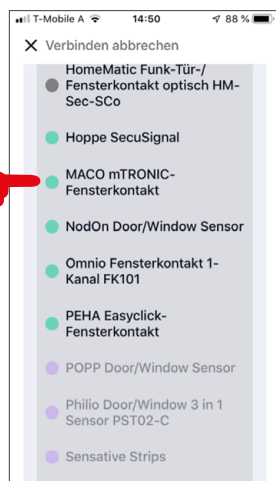
## Integration instructions - homee gateway



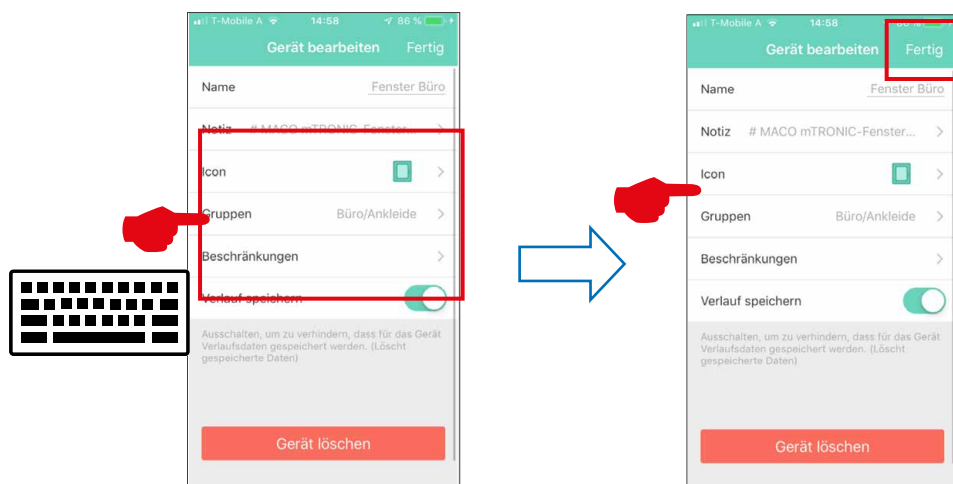
- › Install homee app.  
The homee cube version used must be 2.13 or higher.
- › Start the App, click on the „**Devices**“ function and select „+“ to add a device.
- › Select „**Door/Window Sensor**“ from the device list.



- › Select either „**MACO mTronic window contact**“ or „**MACO eTronic window contact**“ from the list and then press „**Start connection**“.



- › Teach sensor (as per instructions = pass the magnet over the reed contact and shortly press 3 times), sensor is detected → Assign name and icon.
- › Select or enter the sensor name, icon and group and save the configuration with „**Finish**“.



- › Check sensor by operating the window. If status messages are incorrect, test the mode or the mounting position of the sensor.

Further support and questions and answers on the teaching and integration process in the homee Gateways at: <https://community.hom.ee/> resp. [support@homee.de](mailto:support@homee.de)

#### MACO near you:

[www.maco.eu/contact](http://www.maco.eu/contact)



TECHNOLOGY IN MOTION



This print document is revised regularly.  
The latest version is available at <https://www.maco.eu/assets/759294>  
or scan the QR code.

Created: 02/2018 - Changed: 16.06.2021  
Order No. 759294  
All rights reserved and subject to change.