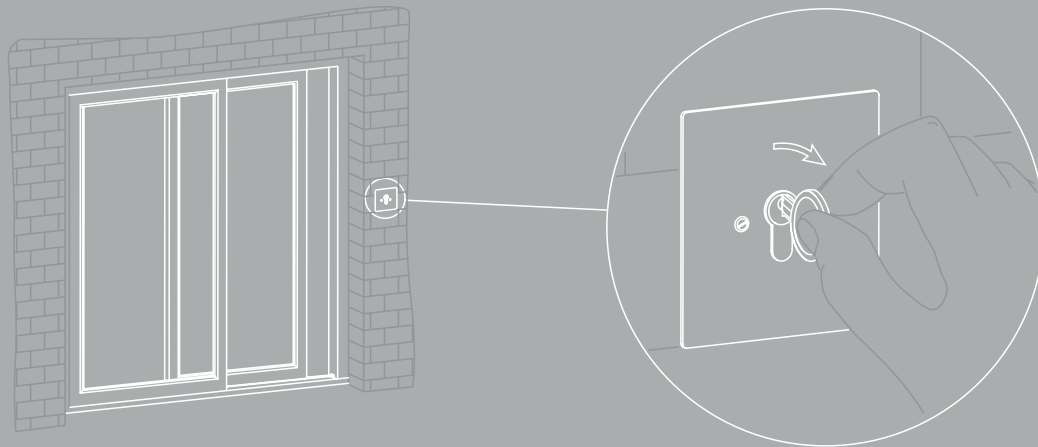


HS Comfort Drive

LIFT AND SLIDE FITTINGS/WINDOW AUTOMATION



INSTALLATION INSTRUCTIONS

Outdoor operation with key-operated switch,
HS Comfort Drive, 24 V DC
wood/wood-aluminium/PVC,
Scheme A/C

Used exclusively for specialist companies.

Copy of the original instructions

Contents

Important safety instructions	3
Warranty	3
Disposal	3
Other applicable documents	4
Intended use	4
Features	4
Device overview	4
Installing the key-operated switch	5
Circuit diagram	6
Function selection	7
Operation	8
Technical specifications	9

Important safety instructions

It is important to observe the following instructions to ensure safety for everyone. Incorrect installation can cause **serious injuries**.

Manufacturer's declaration/technical standard

The accessories contained in this document have been tested and manufactured in line with the applicable European directives. The applicable declaration of incorporation for the HS Comfort Drive is available for inspection. You may only operate the devices if there is a declaration of conformity for the overall system. The actuator meets the latest technical standards and only qualified technical staff may install and service the actuator and carry out any other related tasks.

Personnel

Only a **qualified electrician** (certified to DIN VDE 1000-10, for example) may connect the system to the mains. The actuator must be installed by personnel trained to current standards and based on the recognised code of practice.

Also observe the important safety instructions in the manual for the HS Comfort Drive.

Warranty

HAUTAU's General Terms and Conditions of Business apply to the accessories (online: www.hautau.de/en/).

Disposal



The crossed-out wheeled bin symbol indicates that you must not dispose of this electrical appliance or electronic device in the household waste at the end of its service life.

You can return it to free collection points for old electrical appliances in your area or to other centres where they accept old appliances for recycling.

Contact your local council for addresses of collection points and centres. If the electrical appliance or electronic device contains personal data, you yourself are responsible for erasing data before you return it.

You will find more information online at www.weeeologic.com or other websites on the WEEE Directive.

Other applicable documents

This document comprises additional instructions for the following manuals:

- Installation instructions for HS Comfort Drive, 24 V DC, wood/wood-aluminium, concealed, Scheme A
- Installation instructions for HS Comfort Drive, 24 V DC, wood/wood-aluminium, concealed, Scheme C
- Installation instructions for HS Comfort Drive, 24 V DC, wood/wood-aluminium/PVC, surface-mounted, Scheme A
- Installation instructions for HS Comfort Drive, 24 V DC, wood/wood-aluminium/PVC, surface-mounted, Scheme C

The aforementioned documents apply to this manual. Excluded are the instructions that are not applicable due to the use of the key-operated switch or that result in modifications to the system due to additional optional accessories.

Intended use

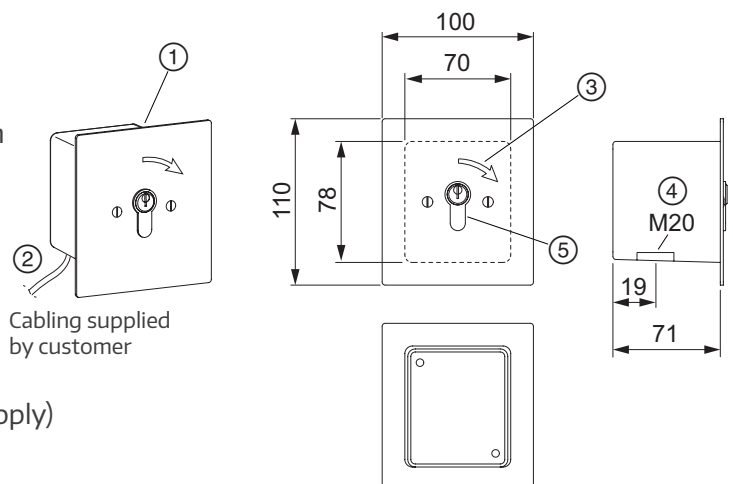
The key-operated switch must be fitted by a professional to the wall on the outer side of the (lift and) slide system as near to the circuit board as possible (in the case of Scheme C: the fixed sash circuit board). It must be connected to the circuit board for the HS Comfort Drive concerned as per the circuit diagram. Manual operation using a key is only permitted to open/close the sliding sash(es).

Features

- › Solid flush-fitted housing
- › Suitable for outdoor installation
- › The housing cannot be opened without a key
- › For installation in the wall next to the HS Comfort Drive's circuit board for its operation (open/close)
- › Connection to the HS Comfort Drive circuit board via a 3-wire cable
- › Delivered without profile half cylinder

Device overview

- ① Two-sided flush-mounted key-operated switch (item code 201943)
- ② Power supply and connection to the HS Comfort Drive circuit board, Terminal X1
- ③ Open/close direction of operation (symbol can vary)
- ④ Cable bushing
- ⑤ Profile cylinder (not included in the scope of supply)

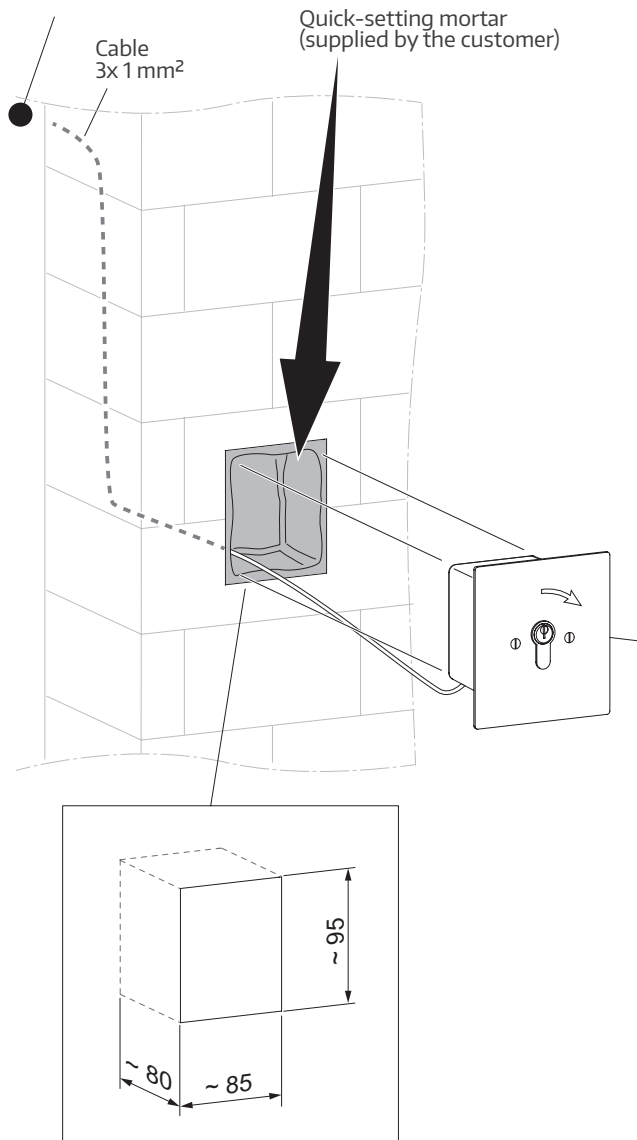


Installing the key-operated switch

The customer must provide a recess to fit the key-operated switch and space to feed the cabling to the HS Comfort Drive circuit board. The installation location must be dry and easy to access.

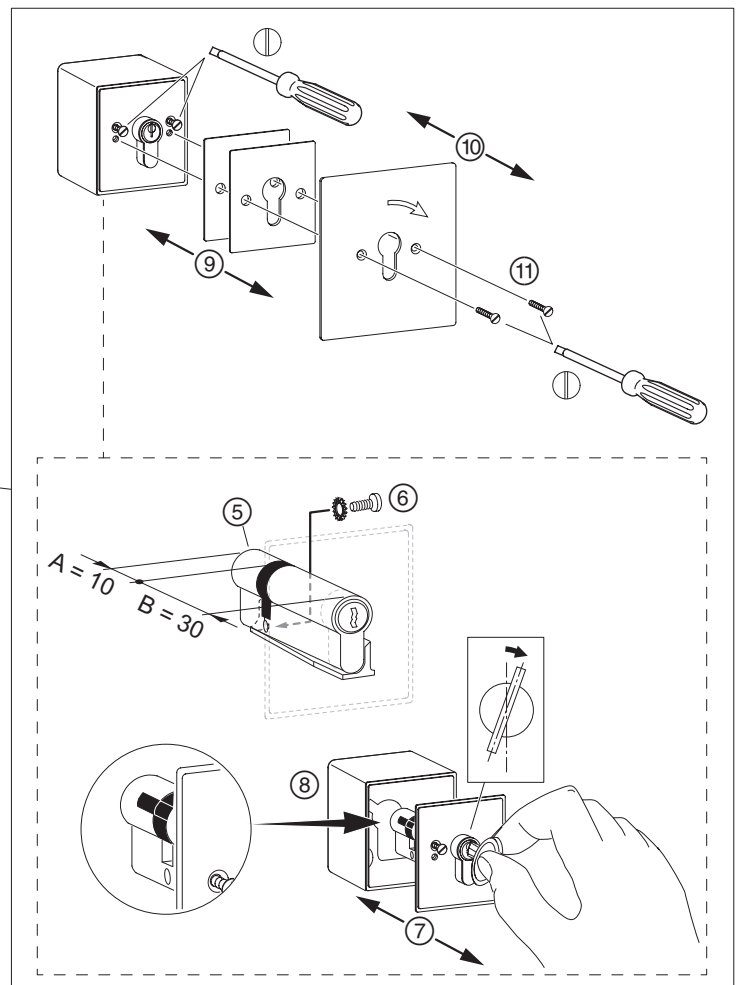
The key-operated switch is fixed in position with material such as quick-setting mortar. The connecting cable should be routed through an empty conduit.

Position of the HS Comfort Drive circuit board



There is no need for a new calibration run (Home Init) after installation.

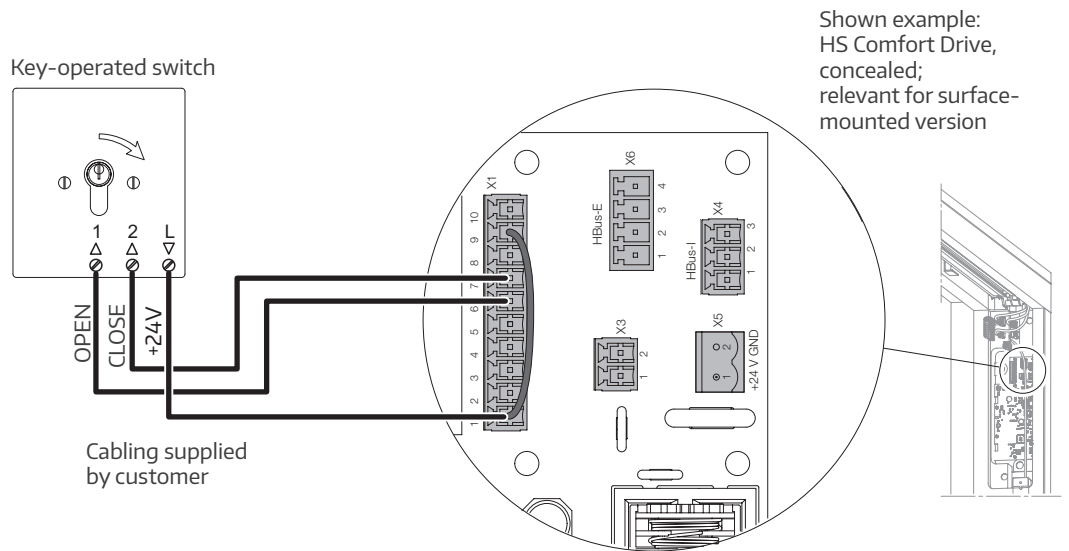
- ⑤ Profile cylinder
- ⑥ Profile cylinder securing bolt
- ⑦ Cover plate with screws
- ⑧ Housing
- ⑨ Seals
- ⑩ Front plate (surface-mounted)
- ⑪ Front plate attachment screws



WARNING
Disconnect the power supply to the actuator while carrying out connection work.
If you do not, this poses a life-threatening hazard due to electric shock.

Circuit diagram

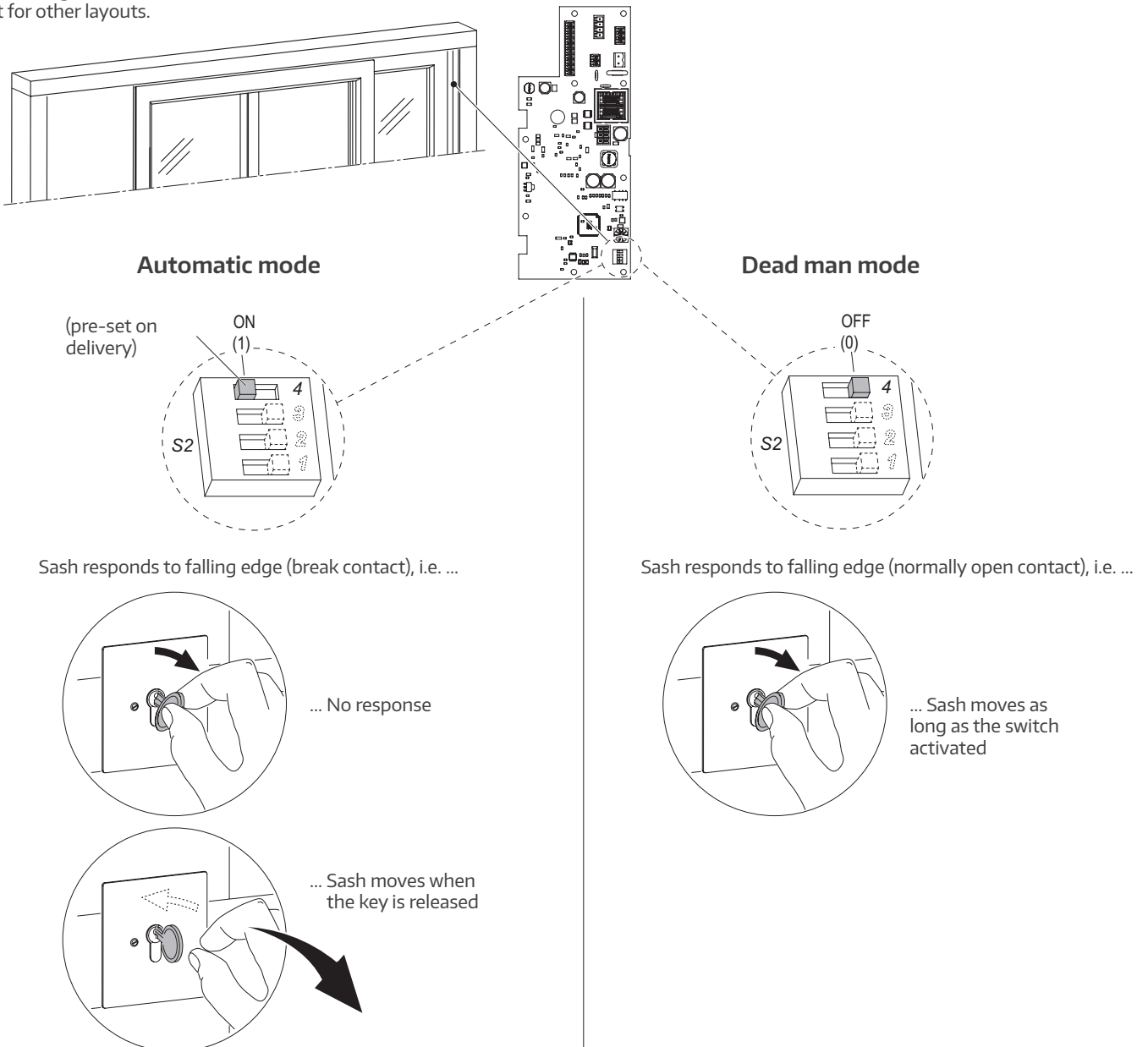
In the case of Scheme C, connection is made to the fixed sash circuit board.



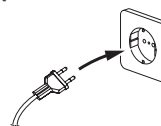
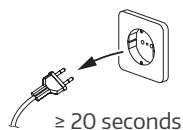
Function selection

You can use the S2 DIP switch 4 to change the key-operated switch function from automatic mode (pre-set on delivery) to dead man mode.

Example layout;
The setting for the S2 DIP switch 1/2/3 is different for other layouts.

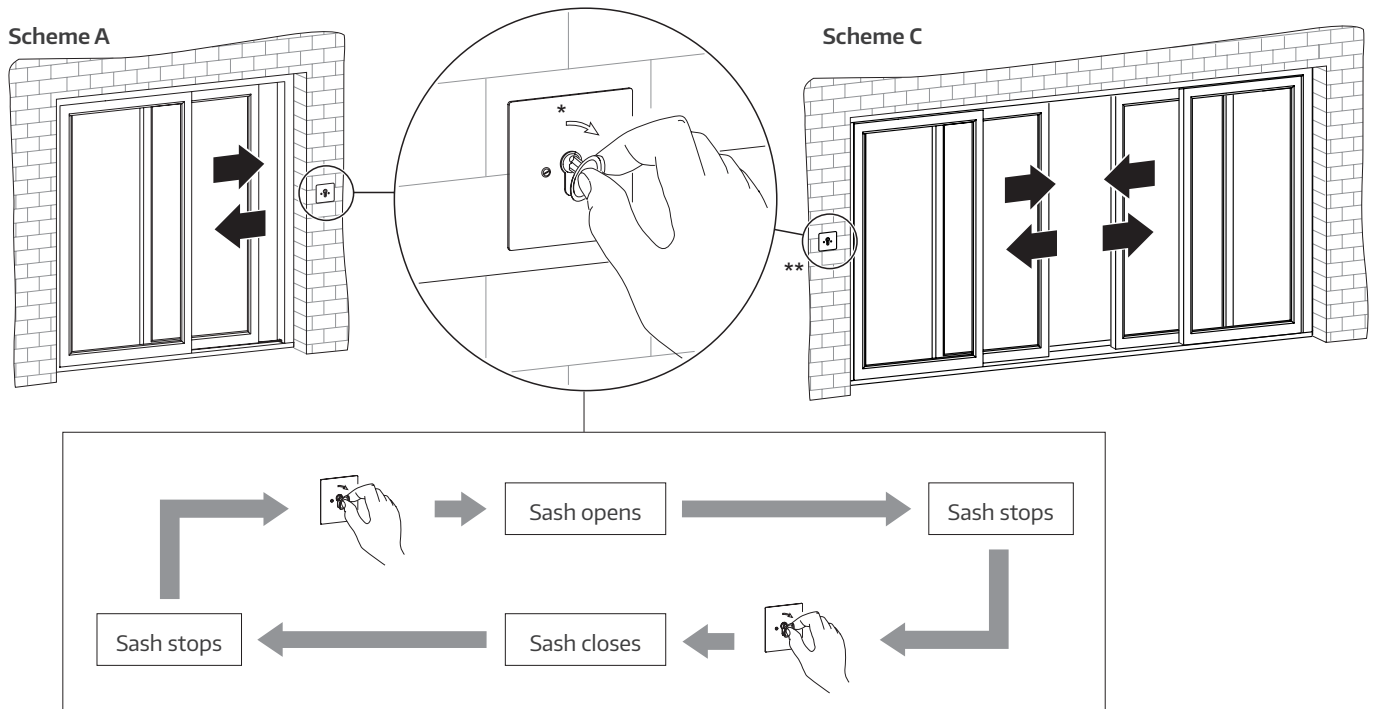


After changes to the S2 switch, the power supply unit must be disconnected from the power supply for at least 20 seconds.



Operation

The control keypad remembers the sash's last movement. Randomly activating the key-operated switch in quick succession will mean the commands are ignored to protect the actuator system.



- *) Symbol may vary; sliding sash(es) moves/move, ...
... as soon as the key is turned right (dead man mode) or
... if the key is released after being turned right (automatic mode)
- ***) Position may vary



IMPORTANT NOTE:

A factory reset and software reset of the HS Comfort Drive are **not** possible with the key-operated switch. Such resets can only be performed with the standard control keypad or a control button/button box.

Technical specifications

Operational power supply	
Supply voltage	24 V DC (-10%/+30%)
Ripple	≤ 20% in relation to the nominal voltage
Current draw	max. about 14 mA Standby about 4 mA
Wattage	max. about 0.4 W Standby about 100 mW
Max. switching current	16 A
Material and mechanical properties (without profile cylinder)	
Dimensions: w x h x d (mm)	Box: 70 x 78 x 73 (depth includes cover) Cover: 100 x 110 x 2
Housing	Aluminium
Colour	Grey/blank
Halogen-free	Yes
Silicone-free	Yes
RoHS-compliant	Yes
Signalling	Without
Installation and environmental conditions	
Nominal temperature	20 °C
Ambient temp. range	-30 °C to +70 °C
Installation conditions	Dry
Suitable for outdoor installation	Yes
Protection rating	IP55 (as per EN 60529)
Approvals and certificates	
CE-compliant	Yes, with EMC Directive 2004/108/EC and Low Voltage Directive 2006/95/EC
RoHS-compliant	Yes, with Directive 2011/65/EC
Protection class	Class III
Attachment to structure	Flush installation in wall
Use for HS Comfort Drive	Software version 5.0 and higher for the main actuator circuit board
Delivery	without Profile cylinder

HAUTAU GmbH

Wilhelm-Hautau-Strasse 2

31691 Helpsen

Germany

Tel.: +49 5724 3930

Email: info@hautau.de

www.hautau.de/en/



This printed document is continually updated.
You will find the latest version at <https://www.maco.eu/assets/759972>
or scan the QR code.

Created: 08/2023 – amended: 06/2024
Order no. 759972
All rights reserved. Subject to change.